

IMPORTANT COLLECTION .
OF BEAUTIFUL
OBJECTS OF ART
AND DECORATIVE
FRENCH FURNITURE

May 27-31 - June 1, 1916

THE ANDERSON GALLERIES
NEW YORK

*Indexed
2/11*

NO. OF COPIES *2*



SOME IMPORTANT OBJECTS IN THE COLLECTION

CATALOGUE OF THE VERY LARGE
AND IMPORTANT COLLECTION OF
BEAUTIFUL OBJECTS OF ART
AND
DECORATIVE FRENCH FURNITURE
OF THE HIGHEST QUALITY

TO BE SOLD BY ORDER OF
M. JULES RATZKOWSKI, OF PARIS
Who Brought the Collection to America

On the Afternoons of
Saturday, Monday, Wednesday and Thursday
May 27, 29 and 31, and June 1, 1916
at 2:30 o'clock

On Public Exhibition from Friday, May 19th

THE ANDERSON GALLERIES
MADISON AVENUE AT FORTIETH STREET
NEW YORK

*Indexed
WH*

CONDITIONS OF SALE

1. All bids to be PER LOT as numbered in the Catalogue.
2. The highest bidder to be the buyer; in all cases of disputed bids the lot shall be resold, but the Auctioneer will use his judgment as to the good faith of all claims and his decision shall be final. He also reserves the right to reject any fractional or nominal bid which in his judgment may delay or injuriously affect the sale.
3. Buyers to give their names and addresses and to make such cash payments on account as may be required, in default of which the lots purchased to be resold immediately.
4. The lots to be taken away at the buyer's expense and risk within twenty-four hours from the conclusion of the sale, and the remainder of the purchase money to be absolutely paid on or before delivery, in default of which The Anderson Galleries, Incorporated, will not be responsible if the lot or lots be lost, stolen, damaged, or destroyed, but they will be left at the sole risk of the purchaser, and subject to storage charges.
5. To prevent inaccuracy in delivery, and inconvenience in the settlement of purchases, no lot will be delivered during the sale.
6. All lots will be exposed for public exhibition in The Anderson Galleries before the date of sale, for examination by intending purchasers, and The Anderson Galleries, Incorporated, will not be responsible for the correctness of the description, authenticity, genuineness, or for any defect or fault in or concerning any lot, and makes no warranty whatever, but will sell each lot exactly as it is, WITHOUT RECOURSE. But upon receiving before the date of sale, expert opinion in writing that any lot is not as represented. The Anderson Galleries, Incorporated, will use every effort to furnish proof to the contrary, and in default of such proof the lot will be sold subject to the declaration of the aforesaid expert, he being liable to the owner or owners thereof for damage or injury occasioned by such declaration.
7. TERMS CASH. Upon failure to comply with the above conditions any sum deposited as part payment shall be forfeited, and all such lots as remain uncleared after twenty-four hours from the conclusion of the sale, will be resold by either private or public sale at such time as The Anderson Galleries, Incorporated, shall determine, without further notice, and if any deficiency arises from such resale it shall be made good by the defaulter at this sale together with all the expenses incurred thereby. This condition shall be without prejudice to the right of The Anderson Galleries, Incorporated, to enforce the contract with the buyer, without such resale.
8. BIDS. We make no charge for executing orders for our customers and use all bids competitively, buying at the lowest price permitted by other bids.
9. The Anderson Galleries, Incorporated, will afford every facility for the employment of carriers and packers by the purchasers, but will not be responsible for any damage arising from the acts of such carriers and packers.

Priced Copy of this Catalogue may be secured for \$2.00

The Anderson Galleries

Incorporated

MADISON AVENUE AT FORTIETH STREET, NEW YORK.

TELEPHONE, MURRAY HILL, 7680

SALES CONDUCTED BY MR. FREDERICK A. CHAPMAN.

NOTE

This large and important Collection of French Art was brought to the United States for unrestricted public sale by M. Jules Ratzkowski, Official Commissioner-Expert Appraiser of Paris and Cairo.

The sale includes decorative French Furniture of the highest artistic quality, representing the styles of Louis Quatorze, Louis Quinze, Louis Seize, and the First Empire. The Cabinets, Writing Tables, Commodes, and Salon Suites in Aubusson and Gobelin Tapestry are particularly interesting and important.

There are also many beautiful Objects of Art, including a large selection of Porcelains, Sevres and Bisque Vases and Columns finely mounted in bronze, Dresden Groups, Capo di Monte Figures, Chinese Vases, Bronzes and Marbles, Clock Sets, Miniatures, a large Aubusson Tapestry of superior excellence, and many exquisite reproductions of famous pieces in the National Museums and chateaux of France.

COLLECTION OF
BEAUTIFUL OBJECTS OF ART
AND
DECORATIVE FRENCH FURNITURE

FIRST SESSION

Saturday Afternoon, May 27, 1916, at 2:30 o'clock

Lots 1 to 170

- 1 SEVRES BOX
Decorated with subject on green ground; interior enriched with flowers.
- 2 CAPO DI MONTE BOX
Decorated with cupids in relief.
- 3 SEVRES BOX
Decorated with panel after Watteau; on green ground.
- 4 SCEAUX FAIENCE BOX
Decorated with panel of cooing doves; yellow background.
- 5 SQUARE MARSEILLES FAIENCE BOX
Decorated with scene, "Playing Ball."
- 6 TWO SMALL LOWESTOFT VASES
Pink scale and floral decoration. Height, 8 inches.

- 7 TWO SMALL SEVRES VASES
 Decorated with irregular, floral medallions on deep pink ground. Height, 11 inches.
- 8 TWO SMALL EMPIRE SEVRES VASES AND COVERS
 Dolphin handles; decorated with the letters "N" and "J" in gilding on green ground; gilt bronze mounting. Height, 9 inches.
- 9 TWO SMALL CHANTILLY VASES AND COVERS
 Interesting Chinese decoration; soft paste.
- 10 MINIATURE ON IVORY
 "La Repos." In fine gilt bronze frame.
- 11 MINIATURE ON IVORY
 "Marie Leczinska," by Dignas. In gilt bronze frame.
- 12 CAPO DI MONTE BOX
 Louis XV shape; decorated with cupids in relief.
- 13 SEVRES BOX
 In the form of a lily; decorated with flowers; turquoise blue ground.
- 14 PORCELAIN BOX
 Decorated with Louis XV military scene, interior painted with flowers.
- 15 SEVRES BONBONNIERE
 Decorated with charming flowers on a gilded background.
- 16 SEVRES JEWEL CASKET
 Grey camaïen panel decoration, "Love's Gift"; pink ground, with raised gilding.

- 17 **LARGE CAPO DI MONTE JEWEL CASKET**
 Quaint Gothic form; decorated in relief with the Parthenon frieze; velvet lined.
- 18 **SEVRES BONBONNIERE**
 Royal blue ground, enhanced with raised gilding and a scene, "The Musicians"; interior painted with flowers.
- 19 **GILT BRONZE FIGURE**
 "Folly," by Bofill. Height, 11 inches.
- 20 **SIX LOWESTOFT PLATES**
 Lattice-floral borders; embellished with coats-of-arms.
- 21 **TWO EMBROIDERED BOKHARA TABLE COVERS**
 All over pattern of leaf diapers enclosing four-pointed floral motives; executed in rich red silks on deep cream linen. Size, 38 inches square.
- 22 **TWO EMBROIDERED BOKHARA TABLE COVERS**
 All over pattern of four-pointed stars alternated with four-pointed floral motives; executed in rich red silks on deep cream linen. Size, 38 inches square.
- 23 **EARLY PAINTING ON PANEL**
 "The Madonna" and another figure, relieved with gilding. Height, 16 inches.
- 24 **TWO LOWESTOFT VASES AND COVERS**
 Decorated with coat-of-arms, bouquets of flowers and pink scales. Height, 15 inches.
- 25 **TWO BLUE AND WHITE DELFT JARS AND COVERS**
 Chinese figures enhance the scrolled panels; lion terminal. Height, 20 inches.

- 26 CHANTILLY VASE AND COVER
Hexagon, Chinese decoration of birds and flowers.
Height, 13 inches.
- 27 SEVRES JEWEL CASKET
Rectangular, decorated with Watteau subject on green background, enhanced with raised gilding.
- 28 LARGE SEVRES CASKET
Finely decorated with "Mars and Venus" and raised gilding of scrolls; signed C. Poite; silk lined.
- 29 CUT CRYSTAL JEWEL CASE
Gilt bronze mounting; top set with "Ideal Head," after Asti.
- 30 BRONZE AND MOTHER-OF-PEARL JEWEL CASE
Set with a miniature of "Marie Antoinette."
- 31 TWO LOUIS XV CANDELABRA
Gilt bronze; acanthus scrolls; for five lights.
Height, 27 inches.
- 32 GOTHIC TRIPTYCH
Madonna in the center; wings, flowers on gilding.
- 33 FINE PLYMOUTH BOWL
Decorated with flower sprays and gilding; scalloped edge.
Diameter, 11 inches.
- 34 LOWESTOFT VASE AND COVER
Decorated with detached flowers and medallion of coat-of-arms.
Height, 18 inches.

- 35 OPEN WORK OVAL DRESDEN JARDINIÈRE
 Louis XVI manner; decorated with flowers and ribbons.
 Length, 19 inches.
- 36 BRONZE ELECTROLIER
 Surmounting a model of an airship is a crowned female figure of Victory.
- 37 TWO CAPO DI MONTE VASES AND COVERS
 Decoration in relief; subject, "At Love's Altar"; ram head handles. Height, 13 inches.
- 38 TWO LOWESTOFT VASES AND COVERS
 Decorated with flower garlands; pink ribbons; green scales; Satyr head handles. Height, 17 inches.
- 39 FINELY DECORATED PERFUME BURNER
 Flower garlands with green scale grounds; gilt swan handles. Height, 13 inches.
- 40 SEVRES PERFUME BURNER
 Royal blue; richly mounted with lion heads and drapery in gilt bronze. Height, 22 inches.
- 41 SIX CHINESE PLATES
 Decoration of birds and flowers.
- 42 CAPO DI MONTE EWER
 Triton handle, relief decoration of "The Toilet of Venus." Height, 15 inches.
- 43 SEVRES GLACIÈRE WITH TWO HANDLES
 Louis XIV style; body of gadroons, which are alternately decorated with turquoise blue and flowers; gilt bronze mountings. Height, 15 inches.

44 EMPIRE SEVRES PERFUME BURNER

Eagle top; finely decorated with gilding on apple green;
gilt bronze mounts. Height, 16 inches.

45 LOUIS XIV BOULE CLOCK

Shaped case; finely mounted with gilt bronze; group
of seahorses; original in the Louvre.
Height, 3 feet 4 inches.

46 LOUIS XVI SALON SUITE

Finely carved and gilt frames; upholstered in beautiful
tapestry from Manufacture National des Gobelins;
original in the private salon of Marie Antoinette at
Versailles; consisting of sofa and four arm chairs.

47 LOUIS XVI MAHOGANY GUERIDON

Top comprised of a large Sèvres medallion bearing the
portrait of Louis XVI, surrounded by eighteen smaller
madallions of the various court beauties of the period;
painted by "David"; rare gilt bronze mountings; origi-
nal at Versailles.

48 TWO BEAUTIFUL CAPO DI MONTE EWERS

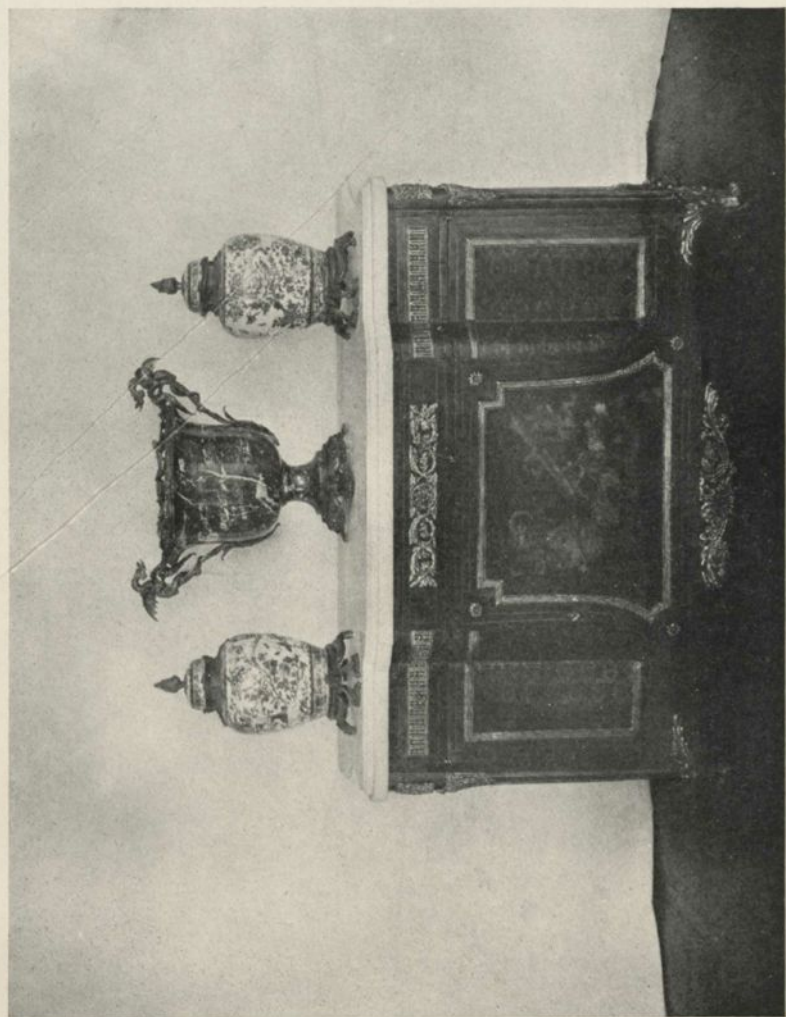
Decorated in relief with "Satyrs and Bacchante"; ser-
pent handles. (One base repaired.) Height, 17 inches.

49 TWO CAPO DI MONTE VASES AND COVERS

Decorated in relief with "Dancing Cupids"; mask han-
dles and cupid terminals. Height, 31 inches.

50 CHINESE VASE

Famille rose decoration in the Kang-hsi style of birds
and flowers; Louis XVI gilt bronze mountings.
Height, 22 inches.



No. 139. LOUIS SEIZE COMMODE
" 151. FLEUR DE PECHE VASE
" 136. CHINESE VASE

- 51 TWO CHINESE VASES
Square form; enriched with flowering peach trees and birds on a black ground; gilt bronze mountings.
Height, 12 inches.
- 52 TWO LARGE CHINESE JARS AND COVERS
Famille rose decoration of flowers and birds.
Height, 23 inches.
- 53 DECORATED DRESDEN GROUP
Four figures and sedan chair; "The Visit," after Lancret.
- 54 TWO EMPIRE CANDELABRA
Fine gilt bronze.
- 55 BEAUTIFUL MARBLE CLOCK SET
Enriched with gilt bronze; consisting of clock and two candelabra.
- 56 BRONZE GROUP
"Charmers." The bronze silvered; various parts of ivory.
- 57 BRONZE FIGURE
"Capture." Portions of the figure of ivory.
- 58 GILT BRONZE CLOCK SET
Richly decorated, consisting of clock and two candelabra.
- 59 SEVRES JEWEL BOX
Decorated with portrait of Mdme. de Pompadour, by Laqua; royal blue ground, with raised gilding; silk lined.

- 60 GILT BRONZE JEWEL BOX
Garlanded; top set with miniature on ivory of "Roxana."
- 61 CAPO DI MONTE JEWEL CASKET
Decorated in relief with cupids.
- 62 TWO EMPIRE SEVRES VASES AND COVERS
Decorated with panels of baskets of flowers; gilt grounds; gilt bronze mountings. Height, 17 inches.
- 63 SEVRES VASE AND COVER
Embellished with bird and floral medallion on turquoise blue ground; crown terminal. Height, 20 inches.
- 64 TWO ROSE DU BARRY VASES AND COVERS
Floral medallion decoration; Louis XVI gilt bronze mountings. Height, 16 inches.
- 65 TWO OVAL PASTELS
"Girl with Cat" and "Girl with Grapes," after Drouet; in Louis XVI carved and gilt frames.
- 66 LIMOGES ENAMEL TRIPTYCH
Center panel, "The Crucifixion"; wings, "The Descent from the Cross" and "Christ Bearing the Cross"; in leather case.
- 67 SEVRES TEA SERVICE
Louis XVI; gadroon bodies, decorated with flowers and ribbon in raised gilding; comprised of teapot, sucrier and creamer.

- 68 BEAUTIFUL SEVRES PERFUME BURNER
 Embellished with garlands of flowers in waving bands on turquoise blue ground; gilt bronze mountings of drapery, griffin handles and claw feet.
 Height, 15 inches.
- 69 LOUIS XVI PERFUME BURNER
 Decorated in royal blue; mountings of lion head handles, claw feet and pineapple top in gilt bronze.
 Height, 21 inches.
- 70 EIGHTEEN SEVRES PLATES
 Assorted in color and design.
- 71 LOUIS XV DRESDEN CLOCK
 An elephant holds the clock and a bouquet of charming flowers; gilt bronze mountings. Height, 18 inches.
- 72 TWO EMPIRE SEVRES VASES
 Urn-shaped; decorated with battle scenes on green grounds; fine gilding; gilt bronze mountings.
 Height, 20 inches.
- 73 TWO LOUIS XV POWDER BLUE EWERS
 Finely mounted with lip, base and handle in scrolls and rocaille of gilt bronze. Height, 18 inches.
- 74 BEAUTIFULLY EMBROIDERED TURKISH COVER
 Cream bolting cloth, partly worked "à jour"; center of two arched columns, with pendant lamp and floral scroll background; three borders, with inscription and lattice, finely executed in silver threads; silver lace edging, lining of pink silk.
 Length, 5 feet 10 inches; width, 4 feet 1 inch.

- 75 BEAUTIFUL EMBROIDERED TURKISH COVER
 Similar to the preceding,
 Length, 6 feet 2 inches; width, 4 feet.
- 76 BRONZE FIGURE
 "The Brave Man." The bronze silvered; portions of
 carved ivory.
- 77 BEAUTIFUL MARBLE CLOCK SET
 Enriched with fine gilt bronze mountings; consisting
 of clock and two candelabra.
- 78 BRONZE FIGURE
 "Arabian Girl"; the bronze silvered; portions of figure
 of carved ivory.
- 79 LOUIS XV SEVRES JEWEL CASKET
 Graceful form; decorated with Watteau subjects on
 royal blue ground.
- 80 CAPO DI MONTE JEWEL CASKET
 Decorated in relief; top, "Diana and Her Nymphs";
 sides, Cupids.
- 81 LARGE SQUARE JEWEL BOX
 Gilt bronze, with miniature of the Duchess of Devon-
 shire surrounded by blue enamel in top.
- 82 BRONZE GROUP
 Napoleon I, by Somme. On green marble base.
 Height, 17 inches.
- 83 BRONZE FIGURE
 "Eve Conquering," by Gory. On green marble base.
 Height, 19 inches.

- 84 OLD FRENCH CARVED IVORY FIGURE
 "Christ Crucified." A remarkably well sculptured rendering; "as is."
- 85 CHINESE VASE
 Decorated with floral panels, grounds of powder blue in the Kang-hsi manner; beautiful gilt bronze mountings in the Louis XV style. Height, 20 inches.
- 86 CHINESE VASE AND COVER
 Gadrooned and elongated body; famille rose; decoration of flowers and birds in the manner of the Chieng-lung period. Height, 17 inches.
- 87 TWO CHINESE GLACIERES
 Octagonal; famille verte panel decoration of flowers and birds in the manner of the Kang-hsi period; Louis XVI gilt bronze mountings. Height, 20 inches.
- 88 SEVRES PERFUME BURNER
 Decorated with panels of flowers and gilded pink and blue bands; Louis XVI gilt bronze mountings. Height, 18 inches.
- 89 LOUIS XIV WRITING TABLE
 Inlaid with tulip and kingwood; tooled leather top; beautiful bronze mountings; replica of the famous Ministre de Marine model. Length, 6 feet 2 inches.
- 90 DECORATED DRESDEN GROUP
 Finely modelled; four classical figures representing "History."
- 91 LOUIS XVI THREE-FOLD SCREEN
 Finely carved and gilt frame; shaped top panels of mirrors; rich silk brocade under. Height, 5 feet 6 inches; width, 4 feet 2 inches.



- No. 147. SEVRES VASE AND COVER
" 322. SEVRES PEDESTAL, holding vase
" 492. TWO BRONZE CANDELABRA
" 158. BISQUE SEVRES PEDESTAL, holding candelabrum

- 92 BEAUTIFUL LOUIS XVI MAHOGANY COMMODE
 Shaped case; richly mounted in gilt bronze with arched front holding a rare trophy; moulded panels and claw feet; statuary marble top; original at Fontainebleu.
 Height, 3 feet; width, 6 feet.
- 93 TWO LARGE EMPIRE SEVRES VASES
 Revolving bodies; decorated with medallions showing the battles of "Wagram" and "Friedland" on blue grounds; richly mounted with gilt bronze; inscribed "Offre par le Prince de Beauharnais a Princesse Mu-"
 Height, 24 inches.
- 94 EMPIRE SEVRES VASE AND COVER
 Decorated with Rose du Barry glaze and finely gilt scrolls; interesting mountings of gilt bronze.
 Height, 20 inches.
- 95 TWO LOUIS XVI VASES AND COVERS
 Revolving; pastoral medallion after Watteau; gilt bronze mountings.
 Height, 32 inches.
- 96 LOWESTOFT TEA SERVICE
 Ribbed bodies; ribbon decorations; comprised of tray, teapot, sucrier, creamer and cup and saucer.
- 97 LARGE SEVRES PLAQUE
 Empire; decorated with center panel; subject, "Love's Gift"; cupid and scroll border. Diameter, 17 inches.
- 98 TWO CAPO DI MONTE VASES AND COVERS
 Graceful form; relief decoration of "Venus at Her Mirror"; mask handles.
 Height, 18 inches.

- 99 TWO BEAUTIFUL CAPO DI MONTE VASES AND COVERS
Elongated body on square base; mask and scroll handles; decorated with cupids in relief.
Height, 32 inches.
- 100 BRONZE FIGURE
"Joan of Arc"; portions of the figure in carved ivory.
- 101 LOUIS XVI WORK TABLE
Enriched with marqueterie.
- 102 BEAUTIFUL SILK GOBELIN SALON SUITE
Carved and gilt frames; tapestry subjects, "Amours" after Boucher. Original in the private apartment of Louis XVI at Versaille; consisting of one canapé and four arm chairs.
- 103 DRESDEN INKSTAND
Two cups, figure and goat in center of Vernis Martin tray; gilt bronze mounting.
- 104 TWO LOWESTOFT VASES AND COVERS
Decorated with floral garlands and ribbons; handles of ribbons.
Height, 18 inches.
- 105 TWO LOWESTOFT VASES AND COVERS
Twisted, gadrooned bodies, decorated with small flowers and drapery.
Height, 15 inches.
- 106 EMPIRE CLOCK SET
Clock, gilt bronze; classical female figure supports; eagle terminal; on antique verte marble; two candelabras for six lights to match.
Height, clock, 29 inches.

107 LARGE SEVRES JEWEL CASKET

Finely decorated with "Mars and Venus"; signed Pointivel; blue ground; interior embellished with a portrait of Madame Lamballe.

108 CAPO DI MONTE MARRIAGE CASKET

Gothic shape; enhanced with figures in relief; bronze mount.

109 TWO LARGE LOUIS XVI SEVRES VASES WITH COVERS

Oviform; decorated with medallions; subject, "Rustic Pleasures" after Watteau, by Bertrand; turquoise blue grounds; inscribed, "Offrè par le duc de Richelieu à Princesse Lamballe." Height, 42 inches.

110 TWO DECORATED DRESDEN FIGURES

Finely modelled; on rococo bases; "Mars" and "Minerva." Height, 25 inches.

111 TWO MAGNIFICENT LOUIS XVI VASES

Sevres; revolving; finely decorated by Maxant; subject, "Venus and Cupid"; royal blue neck and bases; richly mounted in mercury gilt bronze.

Height, 52 inches.

112 THREE MINIATURES ON IVORY

Louis XVI, Marie Antoinette and the Princesse Lamballe, by Berot. Enclosed in gilt bronze.

113 MINIATURE ON PARCHMENT

"Christ and the Virgin." Gilt bronze frame.

114 LOUIS XV INLAID TALL CLOCK

Tulipwood shaped case, finely enriched with gilt bronze mountings of scrolls and rocaille; surmounted by the figure of Father Time in green bronze; original in the Metz Museum. Height 8 feet.

115 TWO MAGNIFICENT MARBLE VASES AND PED-
ESTALS

Rouge royale; enriched with goat head handles and vine and grape festoons; square molded pedestals.

Height, vases, 35 inches; height, pedestals, 31 inches.

116 LOUIS XIV MARQUETERIE COMMUNE

Shaped ends; magnificently mounted with cupids, warriors, trophies and sunburst in gilt bronze; white marble top; original belonged to the Princess of Condé and is now in the Chantilly Museum.

Height, 3 feet 3 inches; width, 6 feet 9 inches.

117 BEAUTIFUL LOUIS XVI SALON SUITE

Finely carved and gilt frames, oval backs; upholstered in Aubusson tapestry; bouquet of flowers with canopy of drapery, in soft, rich colorings; consisting of sofa and four arm chairs.

118 TWO LARGE CHINESE VASES AND COVERS

Famille rose panel decoration of large flowers and butterflies in the manner of the Kang-hsi period; Dog Foo terminals. Height, 29 inches.

119 BEAUTIFUL CHINESE FISH BOWL

Famille verte decoration in manner of the Ming period; panels of lotus and other flowers on the exterior; fish embellish the interior. Height, 18 inches.

120 TWO LOUIS XVI SEVRES VASES

Marie Antoinette decoration of small flowers.

Height, 16 inches.

- 121 TWO CUT CRYSTAL VASES
 Enriched with gilt bronze; sphinx handles; acanthus leaf bases. Height, 21 inches.
- 122 TWO POLYCHROME DELFT VASES
 Louis XV; gilt bronze floral bouquets, fitted for four electric lights; covers exist and can be used in place of bronze bouquets. (One vase repaired.) Height, 35 inches.
- 123 CARVED IVORY STATUE
 Old French; "The Virgin and the Child."
- 124 GILT BRONZE AND MARBLE BUST
 "L'Accordee," by A. Gory. Face and bust of Carrara marble; drapery and hat of bronze. Height, 28 inches.
- 125 GILT BRONZE AND IVORY FIGURE
 "After Mass," by A. Gory. Ivory head and hands. Height, 23 inches.
- 126 MARBLE CLOCK SET
 Enriched with fine gilt bronze mountings; consisting of clock and two candelabra.
- 127 TWO LOUIS XV CANDELABRA
 Fine scrolls and rocaille of gilt bronze.
- 128 BEAUTIFUL SILK GOBELIN SALON SUITE
 Carved and gilt frames; original in the palace of Fontainebleau; comprised of canapé and four arm chairs.



No. 154. TERRA COTTA BUST

129 TWO MAGNIFICENT VASES AND COVERS AND
MAHOGANY PEDESTALS

Revolving; decorated with Boucher subject, "Youth," by Maxant; enriched with gilt bronze mountings; winged female figure handles; the pedestals enriched with three female figures in gilt bronze.

Height, vases, 47 inches; height, pedestals, 43 inches.

130 TWO LARGE SEVRES VASES

Decorated with medallions of "The Crowning of the Emperor Napoleon" and "Marriage to the Empress Josephine," by "Pascault"; fine replicas of the well-known paintings in the Louvre; gilded royal blue ground; mounted with gilt bronze.

Height, 4 feet 8 inches.

131 TWO LARGE SEVRES VASES AND COVERS

Finely decorated with scenes, "The Battle of Moscowa" and "Battle of Polotsk," after Vernet; Rose du Barry grounds; Empire gilt bronze mountings; swan handles; eagle necking; marked "Presenté par Prince Murat à Princess Borghese."

Height, 4 feet 4 inches.

132 RARE SILK MUSSULMAN ROBE

Grass green, with gold threads woven in yoke and borders.

133 RARE SILK MUSSULMAN ROBE

Crimson, with gold threads woven in yoke and borders.

134 TWO ROUND MAHOGANY PEDESTALS

Louis XVI; fine scroll mountings of gilt bronze.

Height, 3 feet 5 inches.

135 CHINESE INCENSE BURNER

Hexagonal; medallions of flowers on pink ground; Louis XV gilt bronze mountings.

Height, 16 inches.

136 TWO CHINESE VASES

Bulging shapes; famille verte decoration in the Ming manner; birds, butterflies and peonies; fine Louis XV mountings in gilt bronze. Height, 22 inches.

(See Illustration)

137 LOUIS XVI GILT BRONZE CLOCK

Finely modelled; cupids sporting amongst clouds carry a blue globe which holds the clock; an opening in the globe shows the single hour of the day, the dial revolving inside. Height, 2 feet 6 inches.

138 TWO LOUIS XIV CANDELABRAS

Royal blue Sevres vases, adorned with gilt bronze rams' heads and garlands emit bouquets of flowers; fitted for electricity with seven lights each.

Height, 3 feet 11 inches.

139 LOUIS XVI MARQUETERIE COMMODORE

Shaped ends of diaper pattern; the front adorned with vase and flowers; richly mounted with gilt bronze; top of statuary marble; original in the Hamilton Palace Collection.

Height, 3 feet 1 inch; width, 5 feet 6 inches.

(See Illustration)

140 LOUIS XVI INLAID VITRINE

Tulipwood and mahogany; richly mounted in gilt bronze. Height, 5 feet 5 inches; width, 2 feet 3 inches.

141 TWO MAGNIFICENT SEVRES VASES AND COVERS

Louis XVI style; decorated with "Serment d'amour," by "Maxant"; richly mounted in chased mercury gilt bronze; winged female handles terminating in acanthus scrolls. (One repaired.) Height, 5 feet 2 inches.

142 BEAUTIFUL SEVRES JARDINIERE MOUNTED
ON MAHOGANY PEDESTAL

Decorated with allegorical subjects after Boucher, by "Maxant"; turquoise blue ground; revolving tops; tripod pedestals finely mounted in gilt bronze with winged and scroll female figures, claw feet and scrolls. (Cracked.) Total height, 5 feet 10 inches.

143 BEAUTIFUL AUBUSSON TAPESTRY PANEL

"Ahasuerus' Feast to Esther"; at the royal board sit the king and queen and three personages, while an attendant is nearby; all in classical costumes; the background is of blue, quaintly diapered; to left and right draperies enclose the scene; fine border of flower garlands, edged with a narrow band of fleur-de-lis; soft coloring of dull blues, greens, orange and tawney brown.

Height, 8 feet 70½ inches; width, 9 feet 6 inches.

144 LOUIS XVI TULIPWOOD FIRE SCREEN

Sliding panel covered in Aubusson tapestry.

145 BEAUTIFUL ROUND SEVRES TABLE

Top decorated with a portrait of Louis XVI; supported by three porcelain columns, all richly mounted with gilt bronze.

146 SEVRES BISQUE BUST

"Marie Antoinette," finely modelled by "Le Conte." Gilt bronze mounting. Height, 2 feet 3 inches.

147 TWO BEAUTIFUL SEVRES VASES AND COVERS

Oviform; decorated with medallions of "The Walk" and "The Music at the Trianon," after Lancret; royal blue grounds; fine gilt bronze mountings of cupids, scrolls, doves and coat-of-arms; inscribed "Presenté par Duc de Richelieu à Princesse Lamballe."

Height, 4 feet 10 inches.

(See Illustration)

148 SEVRES PEDESTAL

Shaft decorated with classical subject; gilt bronze mountings; rouge royale marble top and base.

Height, 3 feet 2 inches.

149 SEVRES VASE

Empire style; decorated with scene, "The Battle of Rivoli"; apple green enhanced with gilding; mounted in gilt bronze. (Base repaired.) Height, 24 inches.

150 LOUIS XVI PLATEAU

Serrated oval; gilt bronze gallery of balusters interspersed with pedestals and vases. Length, 26 inches.

151 BEAUTIFUL FLEUR DE PECHE VASE

Louis XV; finely mounted with gilt bronze; griffin handles. Height, 22 inches.

(See Illustration)

152 LOUIS XV GILT BRONZE CLOCK SET

Clock enriched with maternal group in green bronze; two candelabras, with cupid and bear in green bronze, fitted for eight electric lights.

Height, clock, 24 inches; height, candelabras, 31 inches.

153 DECORATED DRESDEN GROUP

Six figures on rococo base; "Dancing," after Watteau.

154 LOUIS XVI TERRA COTTA BUST

Mdme. Elizabeth of France, by "Levasseur"; charming in detail and patine. Height, 31 inches.

(See Illustration)

155 LARGE CARRARA MARBLE GROUP

Finely sculptured; "Bacchante and Fauns," after Clodion. (Repaired.) Height, 30 inches.

156 BRONZE FIGURE

"Orange Blossom," by Omerd. On green marble base.
Height, 24 inches.

157 TWO BEAUTIFUL SEVRES VASES

Elongated ovid bodies, decorated with Watteau figure subjects, white backgrounds enriched with gilding; Louis XVI gilt bronze mountings of husk handles; cupid terminal and square bases of acanthus leaves; marked "Offrè par le Duc de Lauzun à Madame de Parabère."
Height, 4 feet.

158 TWO ROUND SEVRES PEDESTALS

Bisque shaft decorated with dancing figures in classical modelled by "Letourneur"; necking and base of royal blue; richly mounted in gilt bronze.

Height, 3 feet 5 inches.

(See Illustration)

159 TWO BEAUTIFUL CAPO DI MONTE VASES AND COVERS

Interesting decoration in relief of "Amphritite and Neptune"; Triton handles and cupid supports.

Height, 35 inches.

160 TWO BEAUTIFUL CAPO DI MONTE PEDESTALS

Interestingly decorated in relief with acanthus leaves and allegorical subjects; bases enriched with draperies and claw feet.

Height, 46 inches.

161 LOUIS XVI SALON SUITE

Finely carved and gilt frames; oval backs; upholstered in Aubusson tapestry with soft green ground; the backs pastoral subjects, seats, episodes in Lafontaine's Fables; consisting of sofa and four arm chairs.

(See Illustration)

- 162 LOUIS XVI INLAID POUFREUSE
 The center opens and forms a mirror; the two side flaps open and make rests for the various toilet necessaries.
 Length, 2 feet 9 inches.
- 163 TWO CHINESE BRONZE INCENSE BURNERS
 Ovoid bodies; decorated with dragons; dolphin handles; covers pierced; cloud and dragon pattern surmounted by an eagle in full relief; tripod dragon supports.
 Height, 56 inches.
- 164 BEAUTIFUL GILT BRONZE CLOCK SET
 Louis XVI; clock surmounted with cupid and butterfly; two candelabra for nine lights. Height, 36 inches.
- 165 MASSIVE BRONZE BUST
 Napoleon I, by Balio. On rouge royal marble base.
 Height, 30 inches.
 (See Illustration)
- 166 LARGE MAHOGANY EMPIRE DESK
 Upper part with drawers; in the center a clock flanked by two bronze caryatides; gilt bronze mountings; original at Malmaison.
 Height, 5 feet 4 inches; width, 4 feet 10 inches.
 (See Illustration)
- 167 BEAUTIFUL BRONZE GROUP
 Finely modelled; old green patine; "Melon de Cretonne"; the original in the Louvre. Height, 33 inches.
- 168 TWO DECORATED DRESDEN BIRDS
 Fine coloring; "Stork" and "Flamingo." On rococo bases.
 Height, 20 inches.

169 TWO CHINESE TEMPLE JARS AND COVERS

Famille verte decoration of birds and flowers.

Height, 28 inches.

170 FOUR LOUIS XIV GILT BRONZE WALL APPLI-
QUES

Mask backs; scroll arms; three lights each, fitted for
electricity.

SECOND SESSION

Monday Afternoon, May 29, 1916, at 2:30 o'clock

Lots 171 to 340

- 171 CAPO DI MONTE BONBONNIERE
Decorated with cupids in relief.
- 172 SEVRES BOX
Royal blue ground, enhanced with raised gilding and scene after Watteau, interior gilt.
- 173 LILLE FAIENCE BOX
Decorated with coat-of-arms.
- 174 SEVRES BONBONNIERE
Decorated with charming flowers on a gilded background.
- 175 MINIATURE ON IVORY
"La billet doux." In silver frame.
- 176 MINIATURE ON IVORY
"Lady Hamilton." Inlaid frame.
- 177 MINIATURE ON IVORY
"Miss Wootten," by Guitry. In gilt bronze frame.
- 178 TWO SMALL SEVRES VASES
Decorated with ribbons and floral garlands.

179 EMPIRE JARDINIÈRE

Sèvres; open trellis pattern, acanthus leaf handles and claw feet.

180 RHODIAN EMBROIDERED LINEN COVER

All over pattern of star medallions in crimson, blue and green silks; oval corner medallion of growing plants.

Size, 33 inches square.

181 RHODIAN EMBROIDERED LINEN COVER

Center of cream and blue, alternating floral diagonal; scalloped border of growing flowers; executed solidly in crimson, pale blue, pink and brown silks.

Size, 44 inches square.

182 TWO EMBROIDERED MOORISH TABLE COVERS

Floral centers on gold background; borders of fruit, executed in red, blue, green and yellow silks.

Size, 38 inches square.

183 EMBROIDERED LINEN TABLE COVER

Rhodian; center medallion inscribed and surrounded by tulip and lotus scrolls, through which runs a pink zig-zag band; border of inscription; executed solidly in crimson, green, dull yellow and blue silks.

Size, 4 feet square.

184 TWO SMALL SEVRES VASES

Floral decoration.

185 TWO SWANSEA VASES

Finely decorated with floral medallions on green grounds.

Height, 10 inches.

- 186 SMALL SEVRES PERFUME BURNER
 Finely decorated with medallions of heads in grey camaieu, a crowned letter "H," and flowers on a turquoise blue ground; gilt bronze mountings.
- 187 MINIATURE ON IVORY
 "Duchesse de Parme." In black, oval frame.
- 188 MINIATURE ON IVORY
 "Mdme. Parabee." In round satinwood frame.
- 189 SMALL SQUARE SEVRES JARDINIERE
 Decorated with a scene, "Rustic Amusement."
- 190 TWO DRESDEN JARDINIERES
 Decorated with borders of green scales and floral panels touched with gold.
- 191 CAPO DI MONTE PLATE
 Finely decorated in relief with center medallion of "Amphitrite"; gilt scroll border.
 Diameter, 12 inches.
- 192 SMALL CAPO DI MONTE JUG
 Renaissance decoration; cover and mounting of gilt bronze.
- 193 SEVRES JEWEL CASKET
 Rococo form; decorated with a pastoral subject after Watteau; royal blue background.
- 194 CAPO DI MONTE JEWEL CASKET
 Decorated with a group in relief, "The Arts."

- 195 SEVRES JEWEL CASKET
Decorated with a pastoral subject on the top, landscapes on the sides; background of turquoise blue and gilding.
- 196 OLD VENETIAN CASKET
Round top; decorated with coat-of-arms on top; front panel, "Hunting Scene"; ground of gilt fleur-de-lis.
Length, 27 inches.
- 197 LOUIS XVI OBLONG CENTRE TABLE
Finely carved and gilt frame with shaped stretcher; marble top. Height, 3 feet 3 inches.
- 198 DECORATED DRESDEN GROUP
Finely modeled; two female figures, "The Billet Doux."
- 199 LOUIS XVI BISQUE BASKET
Gilt bronze handle.
- 200 LOUIS XVI CLOCK
Cupid enrichment in gilt bronze; marble base.
- 201 EMPIRE BRONZE MEDALLION
"Marie Louise and Bounaparte"; on marble ground; framed in bronze.
- 202 MARSEILLES FAIENCE BOX
Louis XV shape; decorated with scene, "Balloon Ascension."
- 203 SEVRES BONBONNIERE
Decorated with charming flowers on a gilded background.

- 204 LOWESTOFT BONBONNIERE
 Decoration of green scales and flowers.
- 205 MINIATURE ON IVORY
 "Pan," after Boucher, by Abet. In gilt bronze frame.
- 206 MINIATURE ON IVORY
 "Louise d'Orleans," by Callot. In carved walnut frame.
- 207 SEVRES TEA SERVICE
 Oval bodies, decorated with flowers, crowns in raised gilding; comprised of teapot, sucrier and creamer.
- 208 SEVRES BOUILLON CUP AND SAUCER AND COVER
 Enriched with bands of roses.
- 209 LOUIS XIV MARQUETERIE CLOCK
 Richly mounted with a group of seahorses and a pediment of the figure of Victory in gilt bronze.
 Height, 3 feet 9 inches.
- 210 LOUIS XVI ROUND INLAID TABLE
 Mirror shelves; bronze mountings of rams' heads and festoons; original at Versailles.
- 211 LARGE CHINESE BOWL
 Formed of nine panels; decorated with vases of flowers and symbolic ornament inside and out; famille verte coloring in the manner of the Kang-hsi period.
 Diameter, 15 inches.
- 212 CHINESE BEAKER
 Famille rose decoration of baskets of peonies, pink bands and other floral medallions in the manner of the Ming period.
 Height, 16 inches.

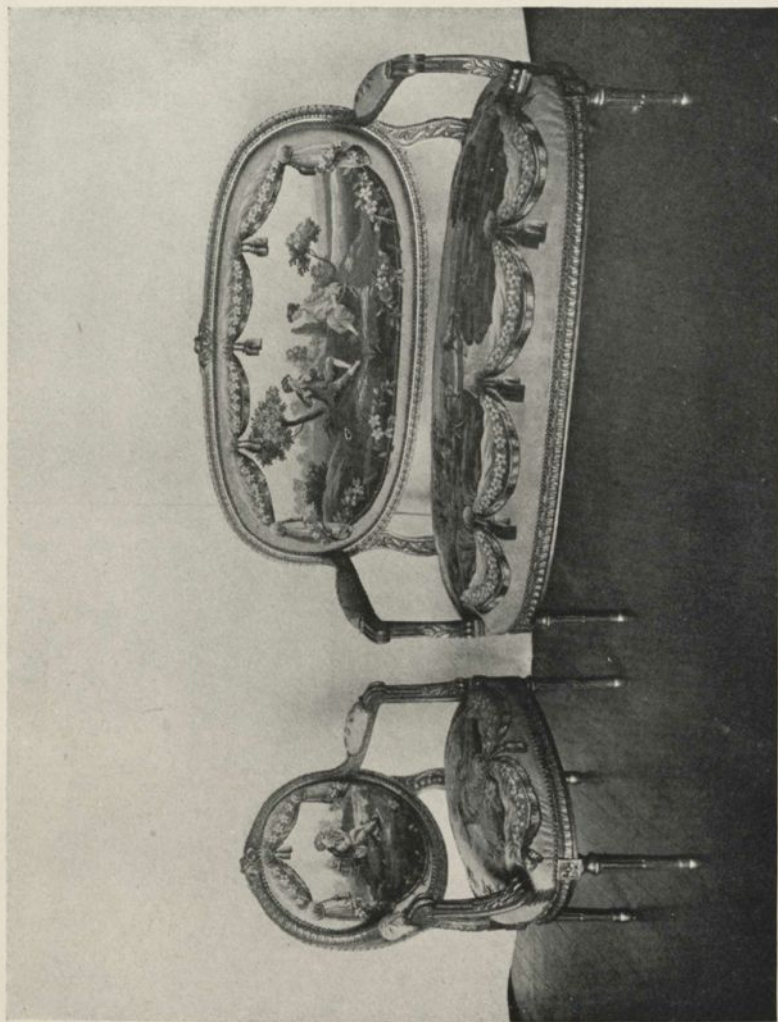
- 213 TWO CHINESE BOTTLE-SHAPED VASES
 Bulbous necks; decorated with panels of birds and flowers on purple grounds in the manner of the Ming period. (One "as is"). Height, 17 inches.
- 214 LOWESTOFT JEWEL CASKET
 Festooned rectangular form, decorated with basket of flowers and pink scales.
- 215 SEVRES JEWEL CASKET
 Decorated with interior scene, "Qu'en dit l'Abbe"; royal blue background.
- 216 GILT BRONZE ROUND JEWEL CASE
 Top set with miniature of "Dolly Varden."
- 217 OVAL SEVRES BOX
 Finely decorated in pink with scrolls of gilding.
- 218 LOUIS XV SILVER BONBONNIERE
 Oval; top embellished with scene, "The Musicians."
- 219 GILT BRONZE INKSTAND
 "Labelle," by Ferville.
- 220 GILT BRONZE CANDLESTICK
 "Labelle," by Ferville.
- 221 GILT BRONZE FIGURE
 "The Smoker," by A. Gory. The face is of ivory.
 Height, 6 inches.
- 222 GILT BRONZE AND IVORY FIGURE
 "Mystic Dancer," by Somme. Head and arms of ivory.
 Height, 11 inches.

- 223 CAPO DI MONTE SUCRIER WITH COVER AND TRAY
Decorated in relief with "Dancing Cupids."
- 224 TWO CAPO DI MONTE MUGS WITH COVERS
Decorated with cupids and "The Seasons"; handles in form of elephant heads.
- 225 CAPO DI MONTE JARDINIERE
Octagonal; relief decoration of single figures of Music and Warriors; mask handles. Height, 13 inches.
- 226 TWO BEAUTIFUL CAPO DI MONTE VASES AND COVERS
Relief decoration of mythological subject and Satyr handles. Height, 14 inches.
- 227 EMBROIDERED LINEN TABLE COVER
Rhodian; center floral medallion; carnation corners; curious running inscription in border; executed solidly in blue, green, red, lavender and orange silks and silver threads. Size, 1 yard square.
- 228 EMBROIDERED MOORISH TABLE COVER
Circular center medallion enclosing conventional floral motives on solid chain stitch of gold thread; diagonal bars; ground of silver enriched with enclosed stars and palmettes; border of inscription on gold ground; executed in pale pink, lavender and blue silks outlined with black; edged with gold lace. Size, 1 yard square.
- 229 EMBROIDERED TURKISH COVER
Cream bolting cloth; center of three arches formed of gold lace insertion; hanging lamps, detached floral and crescent motives; border of insertion and looped scrolls; executed in gold threads and pale pink, green, blue, brown and dark green silks; lined with pink silk.
Length, 5 feet 1 inch; width, 3 feet 2 inches.

- 230 TWO EMBROIDERED RHODIAN CURTAINS
 Bands of pomegranate and carnation scrolls and stars are interspersed with open work cream lace; border of floral, four-pointed stars placed diagonally; executed solidly in crimson, dull yellow, light and dark blue and green silks on linen.
 Length, 10 feet 9 inches; width, 2 feet 11 inches.
- 231 SMALL LOUIS XVI CLOCK SET
 Panier clock on Carrara marble base; cupid decoration. Two candelabra to match.
- 232 EMPIRE CLOCK
 Gilt bronze; enriched with figure of a Vestal Virgin; on green marble base.
- 233 TWO ROCKINGHAM VASES
 Onion form; decorated with panels of baskets of flowers. Height, 6 inches.
- 234 TWO SMALL LOWESTOFT VASES
 Floral festoon decoration.
- 235 TWO CHANTILLY VASES AND COVERS
 Decorated with birds and flowers in the Chinese manner. Height, 8 inches.
- 236 DRESDEN GROUP
 Two figures representing "The Confidence."
- 237 CAPO DI MONTE TANKARD AND COVER
 Decoration in relief; bacchanalian scene; rustic handle and cupid terminal.
- 238 DRESDEN INKSTAND
 Louis XV style, decorated with flowers and raised gilding.

- 239 CAPO DI MONTE JEWEL CASKET
Decorated in relief with "Dancing Cupids."
- 240 SEVRES JEWEL CASKET
Decorated with panel of domestic scene on royal blue ground; lined with brocade.
- 241 MINIATURE ON PARCHMENT
"Head of a Young Girl," by Orsey. Gilt bronze frame.
- 242 MINIATURE ON IVORY
"Marie Antoinette," by Rally. Gilt bronze frame.
- 243 OVAL PASTEL
"Mdme. Leczinska," by Lasty. In Louis XVI garland top frame.
- 244 TWO CAPO DI MONTE VASES AND COVERS
Renaissance; decorated in relief with coat-of-arms and scrolls; two handles. Height, 11 inches.
- 245 CAPO DI MONTE EWER
Relief decoration, bacchanalian subject, goat heads and cupids. Height, 17 inches.
- 246 TWO CAPO DI MONTE POTS AND COVERS
Relief decoration, "Cupids Playing"; lion and claw feet. Height, 13 inches.
- 247 LOUIS XVI MARQUETERIE SECRETAIRE
Tulip and kingwood; delightful gilt bronze mountings of rams' heads, festoons and scroll feet; marble top; original in the Wallace Collection.
Height, 3 feet 8 inches; width, 2 feet 6 inches.

- 248 LOUIS XVI CABINET
 Ebonized and inlaid; gilt bronze mounting; oval medallion after Clodion.
 Height, 3 feet 6 inches; width, 3 feet 9 inches.
- 249 SEVEN SEVRES CUPS AND SAUCERS
 Finely decorated in varied designs and colors.
- 260 TWELVE LOWESTOFT PLATES
 Varied in decoration and form.
- 251 TETE-A-TETE SEVRES COFFEE SET
 Directoire; decorated with flowers, scrolls and blue bands; consisting of coffee pot, sucrier, creamer, two cups and saucers and tray.
- 252 SMALL SEVRES VASE
 Decorated with floral panel; pink ground; gilt bronze mounting.
 Height, 7½ inches.
- 253 TWO SMALL SEVRES VASES
 Decorated with floral garlands and festoons on soft paste.
- 254 OVAL SEVRES JARDINIÈRE
 Decorated with medallion of Watteau subject; royal blue grounds; Louis XVI gilt bronze mountings.
 Height, 14 inches.
- 255 OCTAGONAL SEVRES VASE AND COVER
 Enriched with floral panel on green ground; gilt bronze mountings.
 Height, 13 inches.
- 256 IMPERIAL SEVRES JARDINIÈRE
 Empire style; oval; decorated with bands of yellow and flower garlands; bronze mountings, claw feet; honeysuckle rim.



No. 161. AUBUSSON SALON SUITE

- 257 GILT BRONZE AND IVORY FIGURE
 "The Story Teller," by Mattie. Ivory face and hands.
 Height, 11 inches.
- 258 BRONZE FIGURE
 "The Newsboy," by Cardona. Height, 13 inches.
- 259 GILT BRONZE FIGURE
 "St. Genevieve," by A. Delbois. The saint descends a
 flight of caen stone steps. Height, 13 inches.
- 260 LARGE INDIA PRINT COVER
 Palmette and floral motives in dull tones of greens,
 blues and yellows. Size, $4\frac{1}{4}$ yards square.
- 261 LARGE INDIA PRINT COVER
 Palmette and floral motives, in dull tones of greens,
 blues and yellows. Size, $4\frac{1}{4}$ yards square.
- 262 LARGE INDIA PRINT COVER
 Palmette and floral motives, in dull tones of greens,
 blues and yellows. Size, $4\frac{1}{4}$ yards square.
- 263 FINE EMPIRE CLOCK SET
 White marble with gilt bronze mountings; clock with
 eagles and sphinx; candelabra with female figures; for
 five lights. Height, clock, 25 inches.
 Height, candelabra, 29 inches.
- 264 SEVRES BOWL
 Decorated with floral panels; blue ground and gilding.
 Diameter, 10 inches.
- 265 ROUND LOWESTOFT JARDINIÈRE AND TRAY
 Perforated and decorated with coat-of-arms and flowers.

- 266 TWO OLD DELFT JARS AND COVERS
 Polychrome decoration of flowers and birds in the Chinese manner. Height, 17 inches.
- 267 BRONZE BONBONNIERE
 Top set with enameled miniature of "Fabriola"; green patine.
- 268 CAPO DI MONTE JEWEL CASKET
 Decorated in relief with subject, "Venus at Her Mirror"; sides decorated with cupids.
- 269 GILT BRONZE JEWEL CASE
 Top set with a miniature of "Marie Antoinette"; surrounded with blue enamel.
- 270 TWO CHINESE JARS AND COVERS
 Figure decoration in manner of the Ming Dynasty. Height, 21 inches.
- 271 LARGE CHINESE BEAKER
 Decorated with flying peacocks and peonies in rich coloring. Height, 18 inches.
- 272 CHINESE BOTTLE-SHAPED VASE
 Decorated with birds flying amongst peonies and shrubbery in the manner of the Ming period; Louis XV gilt bronze mounting. Height, 21 inches.
- 273 DECORATED DRESDEN GROUP
 Three figures on rococo base, "Embroidery," after Moreau.
- 274 DECORATED DRESDEN GROUP
 Three figures, "The Mountebanks," on rococo base.

- 275 OVAL SWANSEA BOX
Blue bands and floral decoration; interior painted with flowers.
- 276 SEVRES BOX
Panel decoration of subjects after Watteau; background of green scales.
- 277 CAPO DI MONTE BOX
Decorated with cupids in relief.
- 278 TWO SEVRES VASES AND COVERS
Oviform, with decoration of gay plumaged birds; Satyr handles. Height, 10 inches.
- 279 ROSE DU BARRY SEVRES VASE AND COVER
Twisted neck; fluted cover; lion handles; decorated with floral medallion. Height, 14 inches.
- 280 TWO SEVRES VASES
Spirally fluted necks; mask handles; decorated with subjects after Boucher; turquoise blue background; enhanced with gilding. Height, 18 inches.
- 281 SIX DERBY CUPS AND SAUCERS
Festooned form; decorated with flowers and grape garlands.
- 282 TEN DECORATED CUPS AND SAUCERS
Sevres, Chantilly and Worcester; assorted forms and decoration.
- 283 LOUIS XV CANNEE LIT DE REPOS
Finely shaped and carved walnut frame; upholstered in beautiful pink silk stripe. Length, 6 feet 6 inches.

- 284 LOUIS XV TULIPWOOD COMMODE
Shaped front, embellished with elaborate scrolls and floral garlands in gilt bronze; rouge royal marble top; original at Fontainebleu.
Height, 3 feet; width, 4 feet 6 inches.
- 285 VERNIS MARTIN VITRINE
Shaped front, decorated; mirror back; two glass shelves.
Height, 4 feet 3 inches; width, 2 feet 5 inches.
- 286 OVAL SEVRES JEWEL CASKET
Decorated with subject after Watteau, by Muirie; on light blue ground.
- 287 GILT BRONZE OVAL JEWEL CASE
Top set with landscape on mother of pearl.
- 288 SEVRES JEWEL CASKET
Decorated with scene, "The Huntsman's Return"; royal blue ground enlaced with raised gilding; lined with silk.
- 289 GILT BRONZE FIGURE
"Jeanne d'Arc," by A. Gory; the face and hands are of ivory.
Height, 14 inches.
- 290 IVORY AND BRONZE FIGURE
"Inspiration," by A. Gory; head, arms and feet ivory; on oval green marble base. Ivory slightly cracked.
Height, 17 inches.
- 291 TWO ROSE DU BARRY SEVRES VASES AND COVERS
Classical form; decorated with Cupid panels.
Height, 17 inches.

- 292 TWO SEVRES VASES AND COVERS
 Fluted ovoid bodies; decorated with small garlands of flowers; turquoise blue background enchanced with gilding. Height, 18 inches.
- 293 SEVRES VASE AND COVER
 Acanthus handles; decorated with fluted green bands and garland of flowers. Height, 20 inches.
- 294 GILT BRONZE CLOCK SET
 Louis XVI; clock embellished with Satyrs and Cupids, after Clodion; on marble pedestal. Two candelabras match. Height of clock, 22 inches.
- 295 TWO LOWESTOFT VASES AND COVERS
 Fluted bodies; crown terminals; decorated with floral garlands and pink ribbons. Height, 20 inches.
- 296 OPEN WORK ROUND DRESDEN JARDINIÈRE
 Decorated with flowers, ribbons and medallions. Diameter, 9 inches.
- 297 CHARMING DRESDEN VASE
 Twisted form; decorated with pink gadroons alternating with floral garlands; Louis XVI gilt bronze mountings. Height, 20 inches.
- 298 SMALL GILT BRONZE AND IVORY FIGURE
 "Bretonne," by Somme.
- 299 MARBLE AND BRONZE FIGURE
 "After the Promenade," by Omerd; on black and gold marble pedestal. Height, 24 inches.

300 LARGE CRIMSON SATIN EMBROIDERED PANEL

Five arches surmounted with mosques and minarets; in four of these hang temple lamps, in the center arch a vase holds a large stem of varied flowers and wheat; two floral scroll borders; executed in solid stitch in pale pink, pale blue, old gold and straw yellow silk; gold lace edge. Height, 9 feet; width, 6 feet 6 inches.

301 LARGE TAPESTRY TABLE COVER

Center of flowering shrubs, fruit trees, flower sprays and small chateaux in dull colors and gold threads on cream ground; lattice border of gold threads on brown; floral scroll and leaf edge.

Length, 7 feet 6 inches; width, 6 feet 6 inches.

302 TWO EMPIRE MARBLE VASES AND COVERS

Elongated forms; fine gilt bronze mountings.

Height, 17 inches.

303 LOUIS XV CANNEE RECEPTION SUITE

Carved and gilt frames; loose cushion upholstered in silk brocade; original in the Trianon; consisting of sofa, two bergeres and two side chairs.

304 LOUIS XVI CABINET

Shaped ends; ebony inlaid with brass lines; finely mounted with gilt bronze; black marble top.

Height, 3 feet 10 inches; width, 4 feet.

305 LOUIS XVI SALON SUITE

Finely carved and gilt frames; upholstered in Aubusson tapestry with soft green grounds and floral medallions; consisting of sofa and four arm chairs.

- 306 FINE OLD MARQUETERIE CENTER TABLE
 Tulipwood; shaped frame; cabriole legs and secret lock to the drawers; fine gilt bronze mountings of masks, knees and mouldings.
 Length, 3 feet 6 inches.
- 307 LOUIS XVI OBLONG WORK TABLE
 Mahogany; diapered and hinged top; taper legs; gilt bronze mountings.
- 308 TWO SEVRES VASES AND COVERS
 Louis XVI style; embellished with panels of figure subjects after Tennyers; gilt husk handles; green grounds with gilding.
 Height, 24 inches.
- 309 TWO SEVRES VASES AND COVERS
 Louis XVI; decorated with panels, "Cupids and Nymphs"; neck and base of royal blue.
 Height, 30 inches.
- 310 TWO SEVRES VASES AND COVERS
 Richly embellished with battle scenes of the Great Frederick; blue ground; fine gilt bronze mountings.
 Height, 23 inches.
- 311 LARGE DRESDEN GROUP
 Four figures represent the allegory of "Time."
- 312 TWO MAHOGANY PEDESTALS
 Empire; square tapering shafts.
 Height, 4 feet 2 inches.
 (See Illustration)
- 313 THREE EMPIRE SEVRES PLATES
 Decorated with various colors and the letter "N".

- 314 SEVRES BOUILLON CUP AND COVER
 Marie Antoinette; decoration of detached rose buds and laurel garland border.
- 315 TWO CHELSEA VASES AND COVERS
 Twisted forms; bird decorations. Height, 11 inches.
- 316 OVAL DRESDEN JARDINIÈRE
 Rocaille; handles of masks; open work neck; decorated inside and out with flowers and fine gilding.
 Length, 19 inches.
- 317 TWO LOUIS XVI SEVRES VASES AND COVERS
 Revolving bodies; decorated in royal blue with raised gilding showing the coat of arms of the "Valois"; richly mounted in gilt bronze. Height, 25 inches.
- 318 TWO SEVRES VASES AND COVERS
 Ovoid bodies; embellished with classical medallions by Gilbert; royal blue backgrounds with gilding; Louis XVI gilt bronze mountings. Height, 30 inches.
- 319 RARE SILK MUSSULMAN ROBE
 Mulberry with gold thread woven in yoke and borders.
- 320 RARE SILK MUSSULMAN ROBE
 Dove grey with gold threads woven in yoke and borders.
- 321 TWO SEVRES VASES AND COVERS
 Louis XVI; revolving bodies; decorated with medallions, subjects after Watteau; turquoise blue grounds and gildings; mountings of gilt bronze.
 Height, 26 inches.

322 TWO SQUARE SEVRES PEDESTALS

Louis XVI style; royal blue ground embellished with fine, raised gilding; mounted with gilt bronze.

Height, 3 feet 1 inch.

(See Illustration)

323 TWO LOUIS XVI SEVRES VASES AND COVERS

Revolving; enriched with subjects "Nymphs and Cupids" after Boucher, by Carelle; neck and base of royal blue; fine mountings of gilt bronze.

Height, 49 inches.

324 TWO SEVRES VASES AND COVERS

Enriched with bouquets of flowers on white grounds; gilt bronze mountings.

Height, 26 inches.

325 LOUIS XVI SALON SUITE

Finely carved and gilt frames; trophy pediments; upholstered in blue silk striped brocade; consisting of sofa, two bergeres and two side chairs. (Brocade slightly soiled.)

326 VERNIS MARTIN VITRINE

Shaped front, decorated with pastoral panels; gilt bronze mountings.

Height, 5 feet 10 inches; width, 2 feet.

327 LARGE EMPIRE TABLE CLOCK

Mahogany; richly mounted with gilt bronze appliques; chariot race pediment.

Height, 4 feet; width, 2 feet 1 inch.

328 TWO CHINESE VASES AND COVERS

Famille verte decoration of basket of flowers in the Kang-hsi manner.

Height, 21 inches.

329 SEVRES TEA SERVICE

Decorated with floral panels on green grounds; comprising teapot sucrier, creamer and six cups and saucers.

330 TWO OCTAGONAL IMARI VASES AND COVERS

Charming floral decoration in soft colorings with irregular borders. Height, 30 inches.

331 DECORATED DRESDEN GROUP

In the Chinese manner; canopy top with four figures: "Plutus and the Arts and Sciences."

332 LOUIS XVI MARQUETERIE CABINET

Oval panel of many flowers; gilt bronze mountings. (As is.)

Height, 3 feet 8 inches; width, 2 feet 10 inches.

333 LOUIS XIV BOULE CABINET

Handsome gilt bronze mountings, masks, mouldings and scrolls; statuary marble top.

Height, 3 feet 6 inches; width, 2 feet 6 inches.

334 CHINESE TEMPLE VASE AND COVER

Famille verte decoration in the Kang-hsi manner of peacocks, flowers and rockery. Height, 21 inches.

335 TWO SQUARE CHINESE VASES

Famille verte decoration of birds and flowers; Louis XIV gilt bronze mountings.

336 TWO DECORATED DRESDEN FIGURES

Delightful modelling and coloring; "Cruche cassée" and Laitière," after Greuze. Height, 20 inches.

- 337 TWO EMPIRE SIENNA MARBLE VASES
Slender, oviform bodies; gilt bronze mountings.
Height, 28 inches.
- 338 TWO SEVRES CANDLESTICKS
Marie Antoinette decoration of small flowers.
Height, 9 inches.
- 339 TWO DELFT JARS
Polychrome; decorated with flowers in the Chinese manner.
Height, 12 inches.
- 340 EMPIRE SEVRES INKWELL
Figure of Napoleon in center of the enriched base.

THIRD SESSION

Wednesday Afternoon, May 31, 1916, at 2:30 o'clock

Lots 341 to 512

- 341 CAPO DI MONTE BOX
Decorated with cupids in relief.
- 342 SEVRES BONBONNIERE
Decorated with charming flowers on a gilded background.
- 343 SCEAUX FAIENCE BOX
Heart-shaped; decorated with basket of fruit.
- 344 TWO SMALL SEVRES JARS
Embellished with panels after Watteau, by "Tally"; blue grounds.
- 345 SEVRES COUPE
Mounted on foot; turquoise blue, enhanced with gilding.
Height, 8 inches.
- 346 TWO SMALL CHANTILLY VASES
Decorated with hawthorn and birds.
- 347 DERBY BOWL
Decorated with birds in panel; royal blue ground and gilding.
Diameter, 8½ inches.
- 348 OVAL LOWESTOFT JARDINIERE AND TRAY
Finely decorated with coat-of-arms.

- 349 MINIATURE ON IVORY
 "La Princesse Lamballe." In gilt bronze frame.
- 350 MINIATURE ON IVORY
 "Miss Halley." In old English frame.
- 351 MINIATURE ON PARCHMENT
 "Renown." In gilt bronze frame.
- 352 MINIATURE ON IVORY
 "Children at Play," after Watteau. In gilt bronze frame.
- 353 FINELY EMBROIDERED TURKISH COVER
 Medallion center and corners of cream, olive green and crimson satin; embellished with inscriptions and pineapple motives in gold and silver threads; ground of olive green satin with crescent and star motives; arabesque and floral border. Length, 8 feet 9 inches.
 Width, 6 feet 1½ inches.
- 354 TWO EMBROIDERED BOKHARA TABLE COVERS
 (a) All over pattern of leaf diapers and stars.
 (b) All over pattern of stars and floral motives.
 Executed in rich, red silk on cream linen.
 Size, 38 inches square.
- 355 EMBROIDERED TURKISH COVER
 Cream bolting cloth; center of floral patterned arch holding mosque hanging lamp; palmette, pomegranate and crescent motives; arched border of gold lace insertion and inscription; executed in gold threads and pale pink, green and blue silk threads; lined with blue silk.
 Length, 6 feet 4 inches; width, 4 feet 1 inch.

- 366 BRONZE FIGURE
 "The Scholar," by Cardona. Height, 13 inches.
- 367 GILT BRONZE FIGURE
 "The Dancer," by Levasseur. Height, 8 inches.
- 368 LOUIS XVI LACQUERED BOX
 Metal; decorated with pastoral subjects.
- 369 GILT BRONZE JEWEL BOX
 Mother-of-pearl and red enamel; top set with miniature,
 "Girl's Head."
- 370 CUT CRYSTAL JEWEL CASE
 Enamel top.
- 371 SEVRES JEWEL CASKET
 Louis XV; oval; subjects after Watteau; background of
 cream white and gilding.
- 372 RHODIAN FAIENCE FLOWER HOLDER
 Decorated with medallions and inscription in blue, green
 and purple; "as is." Height, 8 inches.
- 373 DAMASCUS FAIENCE JAR
 Incised decoration of arabesques and inscriptions; yel-
 low-brown glaze. Height, 12 inches.
- 374 RHODIAN FAIENCE JAR
 Oviform; enriched with floral bands, inscriptions and
 medallions in blue, green and purple.
 Height, 11 inches.
- 375 RHODIAN FAIENCE VASE
 Oviform; enhanced with curled fish and symbols in dark
 blue, green and purple. Height, 8 inches.

- 376 RHODIAN FAIENCE FLOWER HOLDER
 Decorated with inscribed and archaic bands in deep blue
 and green. Height, 8 inches.
- 377 BRONZE FIGURE
 "Marguerite"; portions of the figure of ivory.
- 378 BRONZE FIGURE
 "Undine"; portions of the figure are of carved ivory.
- 379 CAPO DI MONTE BOWL AND DISH
 Decorated in relief with "Cupids Playing."
- 380 CAPO DI MONTE TRIPTYCH
 Decoration in relief; subject, "The Assassination of
 Henry IV."
- 381 SEVRES BOUILLON CUP AND COVER
 Decorated with floral panels, festoons and garlands.
- 382 GILT BRONZE AND IVORY FIGURE
 "The Dancer," by Somme. Ivory head and bust; on
 green marble base. Height, 10 inches.
- 383 GRACEFUL SEVRES VASE
 Floral decoration with turquoise blue spirals; mask
- 384 GRACEFUL SEVRES VASE
 Decorated with subject after Watteau; background of
 pale green enhanced with gilding. Height, 17 inches,
- 385 SEVRES VASE AND COVER
 Decorated with medallions of flowers, turquoise blue
 ground, rocaille handles. Height, 16 inches.

- 386 CHINESE VASE
Oviform, with small lip; decorated with flowering trees rising from behind rockery; Kang-hsi.
Height, 12 inches.
- 387 TWO CHINESE VASES
Decorated with baskets of flowers in famille rose coloring.
Height, 16 inches.
- 388 OVAL SEVRES JEWEL CASKET
Empire; medallion of "Napoleon and the Sentry" on violet ground.
- 389 CAPO DI MONTE JEWEL CASKET
Decorated with mythological subjects in relief; gilt bronze mountings.
- 390 SEVRES JEWEL CASKET
Kidney-shaped; decorated with marine views; yellow background.
- 391 LOUIS XIV BOULE CABINET
Black marble top; gilt bronze mountings of masks, mouldings and scrolls.
Height, 3 feet 9 inches; width, 2 feet 6 inches.
- 392 LOUIS XVI ROUND CENTER TABLE
Finely carved and gilt frame; breche marble top.
Diameter, 2 feet 8 inches.
- 393 LOUIS XV THREE-FOLD SCREEN
Interesting shape, carved and gilt frame; top panels of plate glass, lower panels of charming green silk brocade.
Height, 5 feet 10 inches.
Total width, 4 feet 6 inches.

- 394 LARGE CHINESE BEAKER
Kang-hsi manner; medallion of flowers on powder blue ground. Height, 18 inches.
- 395 TWO CHINESE TEMPLE JARS AND COVERS
Famille verte decoration of figures and flowering trees in the Kang-hsi manner. Height, 14 inches.
- 396 TWO CHINESE VASES AND COVERS
Kang-hsi style; decoration of birds, flowers and butterflies. Height, 19 inches.
- 397 GILT BRONZE INKSTAND
Louis XVI, scroll enrichments.
- 398 TWO LOUIS XVI WALL APPLIQUES
Gilt bronze rams' heads, birds and scrolls spring from a green enamel staff for two electric lights; original at the Trianon, by Gouthiere.
- 399 TWO GILT BRONZE CANDELABRA
Acanthus leaf and flame top enrich the scrolls; for three lights each. Height, 16 inches.
- 400 RHODIAN FAIENCE BOWL
Interior embellished with fish, outside with running, floral band; in green and blue, "as is." Diameter, 7 inches.
- 401 RHODIAN FAIENCE VASE
Embellished with fish and flowers in green, blue and plum color, "as is." Height, 11 inches.
- 402 DAMASCUS MOSQUE LAMP
Vase form, six handles; decorated with medallions and inscriptions in green, blue and purple. Height, 12 inches.

- 403 RHODIAN FAIENCE POT
 Decorated with fish, inscriptions and zigzags in green,
 blue and purple. Height, 8 inches.
- 404 RHODIAN FAIENCE BOWL
 Decorated with flowers, inscriptions and archaic scrolls
 in blue, green and purple. Diameter, 9½ inches.
- 405 SEVRES VASE
 In the shape of a perfume burner with cupid head han-
 dles; decorated with floral panel; turquoise blue ground.
 Height, 14 inches.
- 406 BRONZE FIGURE
 "Reading"; parts of the figure are of carved ivory.
- 407 BRONZE FIGURE
 "Bretonne"; the bronze silvered; parts of the figure in
 carved ivory.
- 408 BEAUTIFUL EMPIRE DESK
 Mahogany; enrichments of gilt bronze
- 409 BRONZE FIGURE
 "Harlequin," by Debut.
- 410 TWO SEVRES VASES
 Ovoid; decorated with classical subjects; turquoise blue
 neck and base; gilt bronze mountings.
 Height, 18 inches.
- 411 NINE DECORATED PLATES
 Dresren, Sevres, Worcester, Chelsea and Derby; varied
 in form and decoration.

- 412 TWO SMALL CAPO DI MONTE VASES
Two-handles; decorated in relief with mythological subjects. Height, 8 inches.
- 413 LARGE CAPO DI MONTE PLATE
Decorated in relief with medallions; subjects, The Various Arts." Diameter, 15 inches.
- 414 MINIATURE ON IVORY
"Blind Man's Buff" after Watteau, by Delpit; in gilt bronze frame.
- 415 OVAL PASTEL
"Mdme. Lamballe." Louis XVI frame.
- 416 BEAUTIFUL MINIATURE IN ENAMEL
"The Virgin"; Florentine School. In Louis XVI gilt bronze frame.
- 417 BEAUTIFULLY EMBROIDERED TURKISH COVER
Cream bolting cloth; partly worked "à jour" center, interlacing floral medallion, arched corners; borders of inscription and lattice; executed in silver threads; lined and with silver lace edging.
Length, 7 feet 5 inches; width, 5 feet 2 inches.
- 418 EMBROIDERED BOKHARA PANEL
All over pattern of leaf diapers enclosing four-point stars; executed in rich, red silks on deep cream linen.
Height, 9 feet 4 inches; width, 6 feet 2 inches.
- 419 RARE SILK MUSSULMAN ROBE
Peacock green, with gold threads woven in yoke and borders.

- 420 TETE-A-TETE SEVRES COFFEE SET
 Decorated with panels of pastoral subjects after Watteau; royal blue; backgrounds enhanced with raised gilding; comprised of pot, sucrier, creamer, and two cups and saucers.
- 421 TEN SEVRES PLATES
 Beautifully decorated in varied designs and colors.
- 422 TWO CAPO DI MONTE PLATES
 Decorated with historical heads; gold backgrounds.
 Diameter, 9 inches.
- 423 RHODIAN FAIENCE VASE
 Garland decoration in green, blue and black.
 Height, 6 inches.
- 424 RHODIAN FAIENCE BOWL
 Interior embellished with flowers and leaf scrolls; outside with zigzags in blue, green and purple.
 Diameter, 7 inches.
- 425 DAMASCUS MOSQUE LAMP
 Vase-shaped, three handles; decorated with arabesques and inscriptions in blue, green and black.
 Height, 13 inches.
- 426 MINIATURE ON IVORY
 "The Milkmaid," by Yatel. In gilt bronze frame.
- 427 MINIATURE ON IVORY
 "Mrs. Robinson," by Veit. Gilt bronze frame.
- 428 TWO LARGE CHINESE BEAKERS
 Famille verte decoration of flowers and birds in the Kang-hsi manner.
 Height, 17 inches.

- 429 TWO CHINESE JARS AND COVERS
 Decorated, in the famille verte manner, with landscape
 and figures. Height, 23 inches.
- 430 CHINESE VASE AND COVER
 Famille rose decoration of bird panels and pink floral
 grounds. Height, 20 inches.
- 431 LOUIS XVI FALL FRONT SECRETAIRE
 Tulipwood; shaped front; floral inlay; gilt bronze
 mountings, rouge royal marble top.
 Height, 4 feet; width, 2 feet 2 inches.
- 432 LOUIS XIV WRITING TABLE
 Tulip and kingwood; cabriole legs; richly mounted in
 gilt bronze; leather top. Length, 6 feet 1 inch.
- 433 LOUIS XVI CANNEE LIT DE REPOS
 Carved and patinated gold frames; upholstered with
 loose cushion and bolster in rich yellow and blue silk
 stripe. Length, 7 feet.
- 434 LOUIS XVI DRESSING TABLE
 Enrichments of floral marqueterie.
- 435 BRONZE FIGURE
 "Aurora," by Gadex.
- 436 BRONZE FIGURE
 "Night," by Gadex.
- 437 LOUIS XIV TABLE
 Boule; finely enriched with arabesques and scrolls; gilt
 bronze mountings.



No. 165. BRONZE BUST
" 312. MAHOGANY PEDESTAL

- 438 TWO SEVRES FIGURES
Male and female, costumed in the Louis XIII style;
decorated with gilding on white glaze.
Height, 11 inches.
- 439 INTERESTING BISQUE GROUP
Sèvres; three personages; subject, "Embroidery";
mountings of gilt bronze.
- 440 SEVRES COMPOTIER
Decorated with raised gilding and flowers; fine mount-
ing of ram's head, and acanthus leaf base, in gilt bronze.
Height, 10 inches.
- 441 CHANTILLY VASE
Decorated with medallion, "Cupid and the Muses," in
grey camaieu; handles of female busts in yellow, greens
and blue. Height, 19 inches.
- 442 TWO LOWESTOFT JARS AND COVERS
Inverted pear shape; decorated with floral bouquets;
pink scales at neck and base. Height, 18 inches.
- 443 TWO SQUARE SEVRES JARDINIÈRES
Medallion decoration of flowers; gilt posts.
- 444 HEART-SHAPED CAPO DI MONTE BOX
Decoration of Venus in relief.
- 445 CAPO DI MONTE BOX
Decorated with cupids in relief; gold background.
- 446 CAPO DI MONTE BONBONNIÈRE
Decorated in relief with cupid and lion.

- 447 GILT BRONZE JEWEL BOX
Empire; top set with scene, "Wedding Party."
- 448 CAPO DI MONTE JEWEL CASKET
Decorated in relief with warriors and cupid.
- 449 SEVRES JEWEL CASKET
Decorated with "Domestic Scene," by Kintel; raised gilding on white; interior decorated with flowers.
- 450 LOUIS XVI DRESDEN ELECTROLIER
Figures in a floral arbor of bronze; for two lights.
- 451 LARGE EMPIRE SEVRES PLAQUE
Richly decorated with birds; four medallions in grey caraiieu illustrating episodes in the life of Venus; scroll border. Diameter, 17 inches.
- 452 TETE-A-TETE SEVRES COFFEE SET
Louis XVI; decorated with Watteau panels on dark blue grounds; consisting of coffee pot, sucrier, creamer, two cups and saucers and tray.
- 453 MARSEILLES FAIENCE BOX
Decorated with marine subject.
- 454 SEVRES BONBONNIERE
Royal blue ground, with pastoral subject after Watteau.
- 455 SCEAUX FAIENCE BOX
Louis XVI style; decorated with scene from one of Lafontaine's Fables.
- 456 SCEAUX FAIENCE BOX
Decorated with baskets of fruit

- 457 CAPO DI MONTE JEWEL CASKET
Gothic in form and decoration.
- 458 SEVRES JEWEL CASKET
Rectangular; decorated with panel of interior scene;
royal blue ground; lined with brocade.
(See Illustration)
- 459 LARGE SEVRES PERFUME BURNER
Decorated with deep blue; mounted with guilloche open
neck and laurel base in gilt bronze in the Louis XVI
manner. Height, 18 inches.
- 460 FRANKENTHAL VASE
Fluted body; grotesque handles; decorated in pink; base
of gilt bronze. Height, 15 inches.
- 461 TWO SPILL VASES
Chelsea; decorated with flower bands and pink diapers;
tripod claw feet. Height, 11 inches.
- 462 CHARMING LOUIS XVI SALON SUITE
Finely carved and gilt frames, medallion backs; uphol-
stered in Aubusson tapestry; floral medallions on pale
green grounds; consisting of sofa and four arm chairs.
- 463 LOUIS XVI INLAID LIBRARY TABLE
Tulip and kingwood; cabriole legs and drawers;
mounted in gilt bronze with knees, scrolled mouldings
and feet; original in the cabinet of the Ministre de la
Guerre. Height, 6 feet 3 inches.
- 464 MAHOGANY DESK CHAIR
With arms; enriched with gilt bronze mountings; green
leather seat; original in the cabinet of the Ministre de
la Guerre.

- 465 **LARGE INLAID WINGED BOOKCASE**
 Tulip and kingwood; gilt bronze mountings and trellis doors; original in the cabinet of the Ministre de la Guerre. Height, 7 feet 6 inches; width, 6 feet.
- 466 **GILT BRONZE AND MARBLE BUST**
 "Guirlandes," by A. Gory. Carrara marble head; on green marble base. Height, 17 inches.
- 467 **GILT BRONZE FIGURE**
 "Nonchalance," by Omerd. The figure stands near a granite pillar. Height, 15 inches.
- 468 **TWO SEVRES CANDLESTICKS**
 Marie Antoinette decoration, small garlands and bouquets of flowers. Height, 10 inches.
- 469 **OPEN WORK OVAL DRESDEN JARDINIERE**
 Louis XV manner; scroll handles; decorated with floral medallions. Length, 18 inches.
- 470 **TWO LOWESTOFT VASES AND COVERS**
 Gadroon bodies; finely decorated with panels of small flowers; gilt bronze mountings. Height, 20 inches.
- 471 **SEVRES VASE AND COVER**
 Fluted body, decorated with gilded flowers; pale green background; mounted with gilt bronze. Height, 22 inches.
- 472 **TWO LOUIS XV SEVRES VASES AND COVERS**
 Decorated with bouquets of flowers and rococo scrolls. Height, 15 inches.

- 473 TWO SEVRES VASES AND COVERS
 Louis XVI style; embellished with pastoral scenes.
 Height, 22 inches.
- 474 GILT BRONZE BUST
 By A. Gory. The head of marble. Height, 16 inches.
- 475 GILT BRONZE FIGURE
 "Chanson," by Raphael. The head and hands are of
 ivory. Height, 12 inches.
- 476 CAPO DI MONTE JUG WITH COVER
 Decorated with "Bacchanalian Scene" in relief.
 Height, 15 inches.
- 477 CAPO DI MONTE VASE
 Urn shape; decorated in relief; subject, "Agriculture."
 Height, 10 inches.
- 478 TWO CAPO DI MONTE VASES AND COVERS
 Decorations in relief of cupids dancing; Satyr mask
 handles. Height, 15 inches.
- 479 CHINESE VASE
 Decorations of hawthorn and birds on black ground;
 Chieng-lung manner. Height, 19 inches.
- 480 TWO LARGE CHINESE VASES AND COVERS
 Octagonal; Dog Foo terminals; famille rose decoration
 of figures. Height, 23 inches.
- 481 LOUIS XVI CLOCK SET
 Clock: "The Fontainebleu Chariot," on green marble
 base; two candelabras of female figures, for three lights
 each.

- 482 TWO LOUIS XVI GILT BRONZE CANDELABRA
 Vase supports holding garlands and acanthus leaf scroll arms; for seven lights. Height, 27 inches.
- 483 TWO SEVRES VASES AND COVERS
 Decorated with panels of military subjects; finely mounted in gilt bronze. Height, 30 inches.
- 484 SEVRES VASE AND COVER
 Twisted form; decorated with floral panels and eurythmic blue grounds; gilt bronze mountings. (One cover repaired.) Height, 16 inches.
- 485 TWO SEVRES VASES AND COVERS
 Louis XVI; twisted forms with gadroons; deep blue grounds; mountings of gilt bronze acanthus leaf handles. Height, 21 inches.
- 486 LARGE CHINESE BEAKER
 Famille verte, decoration of flowers, bird and rockery, in the manner of the Kang-hsi period. Height, 28 inches.
- 487 CARRARA MARBLE BUST
 Head of marble; draperies of patinated bronze; "Rubens," by Gory. Height, 26 inches.
- 488 TWO LARGE CAPO DI MONTE VASES
 Urn-shaped; relief decoration of classic figures and mask handles. Height, 18 inches.
- 489 TWO SEVRES VASES AND COVERS
 Elongated form; decorated with the Imperial monogram and panels showing the battles of Eylau and The Pyramids, by Henry; green grounds; gilt bronze mountings. Height, 28 inches.

- 490 TWO SEVRES VASES AND COVERS
Graceful forms; royal blue; enriched with fine Louis XVI mountings of laurel wreaths and ribbons; scroll and drapery handles. Height, 18 inches.
- 491 SEVRES VASE AND COVER
Decoration of flowers and diapered green and white ground; gilt bronze mountings. Height, 21 inches.
- 492 TWO BEAUTIFUL BRONZE CANDELABRA
Louis XVI; a cupid of green bronze patinated; supports a bouquet formed of gilt scroll arms and cut crystal drops; eight lights each. Height, 4 feet 8 inches.
(See Illustration)
- 493 DECORATED DRESDEN GROUP
Three figures on rococo base, "Lady at Her Toilet," after Moreau.
- 494 TWO SEVRES ELECTRIC LAMPS
Varied in design and form; floral decoration; bronze mountings.
- 495 TWO LARGE SEVRES VASES AND COVERS
Decorated with subjects after Watteau; fine gilding on white ground; Louis XVI gilt bronze mountings; cupid terminals; acanthus and scroll handles.
Height, 35 inches.
- 496 SEVRES EMPIRE VASE
Green ground, enhanced with raised floral gilding and the cipher of the Empress Josephine; rich gilt mountings; handles in the form of female figures and scrolls.
Height, 30 inches.

- 497 LOUIS XVI SALON SUITE
 Finely carved and gilt frames; trophy pediments; upholstered in floral silk brocade; consisting of sofa, two arm chairs and two side chairs. (Brocade slightly soiled.)
- 498 LOUIS XIV BOULE CABINET
 Black marble top; gilt bronze mountings of masks, mouldings and scrolls.
 Height, 3 feet 9 inches; width, 2 feet 6 inches.
- 499 EMPIRE TALL CLOCK
 Mahogany; finely mounted with gilt bronze appliques; eagle pediment. Height, 7 feet.
- 500 BEAUTIFUL SEVRES GARNITURE
 Two vases decorated with medallions after Boucher; royal blue grounds; gilt bronze mountings; scroll and female figure handles; oval jardiniere to match vases.
 Height, vases, 21 inches; height, jardiniere, 13 inches.
- 501 TWO SEVRES VASES AND COVERS
 Pear-shaped, revolving bodies, decorated with panels of "The Piquet" and "The Luncheon," after Watteau; on royal blue grounds with raised gilding; Louis XVI gilt bronze mountings. Height, 29 inches.
- 502 LARGE CHINESE FISH BOWL
 Mask handles; famille rose decoration of birds and flowers; interior embellished with fish; fine gilt bronze mountings in the Louis XV style. Height, 16 inches.
- 503 TWO CHINESE JARS AND COVERS
 Ovoid; panels decorated with figures; famille rose in the manner of the Kang-hsi period; Louis XV gilt bronze mounts; scroll and leaf handles, necking and base. Height, 22 inches.
- 504 DECORATED DRESDEN GROUP
 "At the Well." Four figures; gilt bronze mounting.

- 505 MAHOGANY CYLINDER WRITING DESK
 Empire; richly mounted with gilt bronze appliques, griffins, the Imperial coat-of-arms, and snake handles; green marble top.
 Height, 4 feet 2 inches; width, 5 feet 6 inches.
- 506 DECORATED SEVRES GROUP
 Louis XVI style; four figures; subject, "The Toast."
- 507 TWO CHINESE VASES AND COVERS
 Famille verte decoration in the Chieng-lung manner; figures under flowering trees; rich Louis XV gilt bronze mountings.
 Height, 21 inches.
- 508 LOUIS XV CLOCK SET
 Clock embellished with dancing figures in an arbor of flowers, mounted on gilt bronze base. Two-light candelabras match the clock, but with figures of musicians.
- 509 GILT BRONZE BUST
 "Songeuse," by A. Gory. Head of Carrara marble.
 Height, 24 inches.
- 510 MAHOGANY KNEEHOLE WRITING DESK
 Empire; richly embellished with gilt bronze mounting; the upper part holds a clock flanked by two caryatides. Height, 4 feet 4 inches; width, 4 feet 6 inches.
- 511 LOUIS XIV BOULE CLOCK AND WALL BRACKET
 Fine gilt bronze mountings of "Europa and the Bull"; pediment of Victory and scrolled moulded panels.
 Complete height, 4 feet 10 inches.
- 512 TWO SEVRES VASES AND COVERS
 Oviform; decoration of pastoral subjects; blue necks, bases and covers; gilt bronze mountings.
 Height, 30 inches.

FOURTH SESSION

Thursday Afternoon, June 1, 1916, at 2:30 o'clock

Lots 513 to 681

- 513 SCEAUX FAIENCE BOX
Decorated with trophy of musical instruments.
- 514 MOUSTIERS FAIENCE BOX
Louis XV shape; decorated with pastoral scene.
- 515 CHANTILLY BOX
Rectangular; decoration of Chinese figures on yellow ground.
- 516 LOWESTOFT BONBONNIERE
Decoration of garlands and bouquets of flowers.
- 517 MINIATURE ON IVORY
"Miss Duval," signed Cottey; in gilt bronze frame.
- 518 OVAL MINIATURE ON IVORY
"Savonarolla"; black frame.
- 519 MINIATURE ON IVORY
"The Grace," after Watteau; in gilt bronze frame.
- 520 TWO OVAL PASTELS
"The Town Girl" and "Country Girl"; in Louis XVI carved and gilt frames.

- 521 TWO CAPO DI MONTE CUPS AND SAUCERS AND
COVERS
Decorated with mythological subject in relief.
- 522 SQUARE DERBY JEWEL CASKET
Decorated with one of the famous London cries: "Hot
Spiced Gingerbread"; blue background.
- 523 CAPO DI MONTE JEWEL BOX
Decorated in relief; Cupids playing.
- 524 LARGE CAPO DI MONTE JEWEL CASKET
Relief decoration, "Cupids Playing with Goat."
- 525 TWO CHINESE VASES
Famille verte; figure decoration. Height, 16 inches.
- 526 TWO CHINESE POTS AND COVERS
Famille verte decoration of figures in landscape;
Chieng-lung manner. Height, 15 inches.
- 527 TWO DECORATED DRESDEN FIGURES
Fine coloring; "Love's Gift." Height, 15 inches.
- 528 TWO LOUIS XVI WALL APPLIQUES
Gilt bronze ram heads, birds and scrolls spring from a
blue enamel staff; for two lights; originals at the
Trianon, by Gouthière.
- 529 SEVRES EWER
Louis XV; shell form; floral decoration.
Height, 14 inches.

- 530 TWO SEVRES VASES AND COVERS
 Panels decorated with pastoral subjects; royal blue grounds enriched with gilding; mounts of gilt bronze.
 Height, 17 inches.
- 531 SEVRES BONBONNIERE
 Decorated with charming flowers on a gilded background.
- 532 SEVRES BOX
 Turquoise blue ground, enhanced with medallions and gilding; interior painted with flowers.
- 533 NIDERVILLER'S FAIENCE BOX
 Decorated with scene from one of Lafontaine's Fables.
- 534 GILT BRONZE FIGURE
 "At Prayer," by Raphael; the hands, book and face are of ivory, on green marble base.
 Height, 11 inches.
- 535 GILT BRONZE FIGURE
 "Descente d'auto," by A. Gory; the face of ivory.
 Height, 14 inches.
- 536 OLD LIMOGEES ENAMEL
 By Janvier; in leather case.
- 537 RHODIAN FAIENCE POT
 Embellished with inscriptions in green and blue.
 Height, 6½ inches.
- 538 INTERESTING RHODIAN VASE
 Round body; embellished with arabesque band and inscriptions with underbody of diapers in blues and browns.
 Height, 11 inches.

- 539 DAMASCUS MOSQUE LAMP
 Vase form, six handles; decorated with medallions and inscriptions in green, blue and purple.
 Height, 12 inches.
- 540 DAMASCUS MOSQUE LAMP
 Vase-shaped, three handles; decorated with arabasques and inscriptions in blue, green and black.
 Height, 13 inches.
- 541 LIMOGES ENAMEL PANEL
 "The Holy Family," by Latour; in walnut frame.
- 542 LIMOGES ENAMEL TRYPTICH
 Center panel, "Christ and the Magdalene"; wings, "Saints"; in leather case.
- 543 TWO SIENNA MARBLE VASES AND COVERS
 Enriched with gilt bronze mountings; swan handles.
 Height, 16 inches.
- 544 TWO DERBY VASES
 Decorated with medallions of flowers on royal blue and gilded grounds.
 Height, 7 inches.
- 545 SEVRES INKSTAND
 Empire; decorated in yellow and purple; eagle supports.
- 546 TWO LOWESTOFT JARS AND COVERS
 Decorated with medallions and floral bands.
 Height, 12 inches.
- 547 OPENWORK OVAL DRESDEN JARDINIÈRE
 Louis XVI style; decorated with floral medallion and ribbons.
 Length, 18 inches.

- 548 TWO LOWESTOFT BEAKERS
 Vase shaped; decorated with pink scale and coat of arms. (One as is.) Height, 19 inches.
- 549 SMALL LOUIS XVI PEDESTAL CLOCK
 Gilt bronze enrichments; dove terminal; limoges enamel female figure.
- 550 TWO LOUIS XV GIRANDOLES
 Gilt bronze. Height, 20 inches.
- 551 CAPO DI MONTE JEWEL CASKET
 Oval; decorated in relief with mythological subject.
- 552 GILT BRONZE OVAL JEWEL CASE
 Top set with a miniature of Madame Blanc, surrounded with blue enamel.
- 553 GILT BRONZE ROUND JEWEL CASE
 Top set with miniature of "Marie Antionette," surrounded with blue enamel.
- 554 GILT BRONZE JEWEL BOX
 Top of red enamel set with miniature, "Gismonda," by Dacot.
- 555 SEVRES BISQUE BUST
 Well modelled; "Marie Antoinette"; gilt bronze base.
- 556 SMALL LOUIS XVI MARQUETRY COMMODE
 Oval; cabriole legs and stretcher; gilt bronze mounts; marble top.

- 557 REGENCE CANNEE RECEPTION SUITE
 Carved and gilt frames; loose cushions upholstered in fine silk brocade; consisting of sofa, two arm chairs and four side chairs.
- 558 CARVED AND GILT LOUIS XVI VITRINE
 Shaped top; two doors; fluted frieze; mirror back and three glass shelves.
 Height, 6 feet; width, 3 feet 10 inches.
- 559 TWO DRESDEN VASES AND COVERS
 Decoration of flower sprays; handles of cupids.
 Height, 15 inches.
- 560 TWO ROCKINGHAM BEAKERS
 Decorated with flowers and gilded foliage on green ground.
 Height, 9 inches.
- 561 TWO LOWESTOFT VASES AND COVERS
 Graceful forms, irregular gadroons of small flowers; goat head handles.
 Height, 15 inches.
- 562 CHINESE GARNITURE
 Famille rose decoration; flower panels; comprised of three vases and two beakers.
 Height of vases, 12 inches.
- 563 LARGE CHINESE VASE AND COVER
 Ovoid form; famille rose decoration of flowers and peacocks in the Ch'ieng Lung manner; beautiful Louis XVI gilt bronze mountings.
 Height, 30 inches.
- 564 SMALL GILT BRONZE AND IVORY FIGURE
 "The Skater," by Somme.

565 EMBROIDERED MOORISH TABLE COVER

Center of crescent and inscribed medallion on gold background; floral border; executed in pink, pale blue, green, dark blue and crimson silks. 38 inches square.

566 RHODIAN EMBROIDERED LINEN COVER

Scroll bordered, central medallion holding a mosque and floral motives; surrounded by tulip and pomegranate scrolls; border of inscription; executed in pink, old gold, blue and green silks. 4 feet square.

567 EMBROIDERED TURKISH COVERLET

Center of intricate medallions and arabesques on solid sea green embroidered ground; geometric and floral border; executed in pink, dark green, crimson, pale blue, lavender and yellow silks; lace edge of two shades of green

Length, 9 feet 6 inches; width, 5 feet 6 inches.

568 TWO EMPIRE VASES

Medallion decoration of the "Battles of Wagram and Rivoli"; swan handles and other gilt bronze mountings. Height, 23 inches.

569 SEVRES BISQUE VASE

Urn shaped; decorated in relief, "Leda and the Swan"; royal blue necking and base; scroll and female figure handles of gilt bronze. Height, 26 inches.

570 GILT BRONZE AND IVORY FIGURE

"The Reliquary," by Mattie; ivory face and hands. Height, 12 inches.

571 GILT BRONZE AND IVORY FIGURE

"The Princess," by Gory; ivory head and hands. Height, 16 inches.

- 572 DAMASCUS FAIENCE VASE
Oviform; decorated with zigzag and inscribed bands in deep blue and green. Height, 11½ inches.
- 573 DAMASCUS FAIENCE MOSQUE LAMP
Vase-shaped, with six handles; decorated with arabesques and inscriptions interspersed with floral medallions in green, blue and purple. (As is.) Height, 14 inches.
- 574 RHODIAN FAIENCE JAR
Quaint form; decorated with arched band and inscription in blue and brown. Height, 7½ inches.
- 575 DAMASCUS FAIENCE MOSQUE LAMP
Vase-shaped, with six handles; decorated with arabesques and inscriptions in green, blue and purple brown. Height, 14 inches.
- 576 RHODIAN FLARE LIPPED BOWL
Interior decorated with inscribed medallions and zigzag band; outside, archaic scrolls in blue, green and purple. Diameter, 10½ inches.
- 577 DAMASCUS FAIENCE MOSQUE LAMP
Vase-shaped, with six handles. decorated with arabesques and inscriptions interrupted with medallions in green, blue and purple. Height, 14½ inches.
- 578 RHODIAN TWO-HANDLE VASE
Decorated with zigzag, inscribed medallions and flowers in blue and greens. Height, 8 inches.
- 579 DAMASCUS FAIENCE MOSQUE LAMP
Vase-shaped, with six handles; decorated with arabesques and inscriptions, interspersed with floral medallions in green, blue and purple. Height, 14½ inches.

- 580 MINIATURE ON IVORY
 "Mdme Recamier," by Yerel; in Empire gilt bronze
 frame.
- 581 MINIATURE ON PARCHMENT
 "Music," by Frida; gilt bronze frame.
- 582 FOUR SEVRES PLATES
 Center decorated with cupids; cipher of Louis Phillippe;
 blue borders.
- 583 CAPO DI MONTE MUG
 Lion terminal and lion head handle; decoration of
 "Bacchus at the Butt." Height, 8 inches.
- 584 THREE EMPIRE SEVRES PLATES
 Decorated with various colors and the letter "N".
- 585 SEVRES SUCRIER AND COVER
 Decorated with medallion of girl's head on green ground.
- 586 BRONZE GROUP
 "Spinners"; bronze silvered; parts are of carved ivory.
- 587 BRONZE FIGURE
 "Aviator"; finely modelled.
- 588 BRONZE FIGURE
 "Melody," by Carriere Belleuse; bronze silvered; por-
 tions of the figure in carved ivory.
- 589 LOUIS XVI OVAL CENTER TABLE
 Finely carved and gilt frame with floral festoon frieze;
 white marble top. Width, 2 feet 8 inches.

- 590 LOUIS XIV BOULE CABINET
 Black marble top; finely mounted in gilt frame.
 Height, 4 feet; width, 4 feet.
- 591 LARGE EMPIRE CENTER TABLE
 Mahogany; round dove marble top; center support enriched with three carved and gilt swans.
 Diameter, 3 feet 3 inches.
- 592 LOUIS XV INLAID CLOCK
 Shaped case; fine gilt bronze mountings; pediment, "Figure of Victory"; winged female figure and scroll supports; original in the Chantilly museum.
 Height, 4 feet.
- 593 TWO CHANTILLY VASES
 Urn shaped; Chinese decoration of floral medallions on yellow grounds.
- 594 TWO SMALL SEVRES JARDINIERS
 Louis XVI; embellished with medallions and garlands of flowers.
 Height, 7 inches.
- 595 TWO CHANTILLY VASES AND COVERS
 Fluted yellow necks, covers and bases; oval medallions of birds. (One cover as is.) Height, 16 inches.
- 596 SEVRES EPERGNE
 Female figure support decorated with floral bands and gilding.
 Height, 18 inches.
- 597 OVAL SEVRES COUPE
 Decorated with pastoral medallions on royal blue ground; gilt bronze mountings. Height, 16 inches.



No. 166. MAHOGANY EMPIRE DESK
 " 458. SEVRES JEWEL CASKET
 " 608. LOUIS SEIZE INKSTAND
 " 638. SEVRES VASE

finished with bestial decorations on royal blue
 ground and bronze mounts. Height 18 inches

598 EMBROIDERED TURKISH COVER

Cream bolting cloth, partly worked "à jour" center of curious sprayed arch with hanging lamp and floral motives; two borders of floral scrolls and inscriptions; executed in gold threads, pale pink, green and blue silks; lined with pink silk; edging of gold lace.

Length, 6 feet; width, 3 feet 9 inches.

599 BEAUTIFUL EMBROIDERED TURKISH COVER

Cream bolting cloth; interlaced floral medallion center and round medallion corners; borders of inscriptions and lattice; finely executed in silver threads; silver lace edging and pink lining.

Length, 6 feet 11 inches; width, 5 feet 3 inches.

600 BEAUTIFUL EMBROIDERED TURKISH COVER

Similar to the preceding.

Length, 6 feet 2 inches; width, 3 feet 7 inches.

601 SEVRES PERFUME BURNER

Decorated in pink with gilding; mounted in gilt bronze.

602 LOUIS XV GLACIERE

Sevres; gadroon body; decorated in royal blue with fine raised gilding and mountings of gilt bronze.

Height, 27 inches.

603 TWO CHINESE VASES AND COVERS

Famille rose decoration of bats and little figure subjects; Louis XVI gilt bronze mountings.

Height, 17 inches.

604 TWO CHINESE POTS AND COVERS

Famille rose decoration, subject, "Mandarins Bringing Presents to the Emperor"; Louis XVI gilt bronze mountings.

Height, 19 inches.

- 605 MARBLE FIGURE
 "The Miniaturist," by A. Gory; head and hands of ivory; marble draperies. Height, 21 inches.
- 606 FOUR DECORATED DRESDEN FIGURES
 Well modelled, "The Four Seasons." Height, 14 inches.
- 607 EMPIRE BRONZE MEDALLION
 "Marie Louise and Bounaparte," on marble ground; framed in bronze.
- 608 LOUIS XVI INKSTAND
 Gilt bronze mounting; figure of "Pan"; on breche violet marble.
 (See Illustration)
- 609 TWO DRESDEN JARS AND COVERS
 Decorated with garlands of flowers in relief and painted with bouquets of flowers on the background; Cupid terminals. Height, 21 inches.
- 610 TWO DRESDEN JARS AND COVERS
 Decorated with garlands of flowers in relief and painted with bouquets of flowers on the background; Cupid terminal. Height, 18 inches.
- 611 CHINESE INCENSE BURNER
 Famille verte decoration; baskets of flowers; Louis XVI gilt bronze mountings. Height, 13 inches.
- 612 CHINESE GARNITURE
 Famille rose floral decoration in the Ming manner; comprised of three vases and covers and two beakers. Height of vases, 16 inches.
- 613 CAPO DI MONTE TRYPTICH
 Decorated in relief with scene, "The Assasination of Henry IV."

- 614 TWO CAPO DI MONTE VASES AND COVERS
 Decoration in relief of "Apollo"; scroll handles; Cupid terminal. Height, 16 inches.
- 615 CAPO DI MONTE BOWL AND COVER
 Decorated with Cupids in relief; rustic handles.
- 616 BEAUTIFUL CLOCK SET
 Gilt bronze enrichment; consisting of clock and two candelabra.
- 617 FINE BRONZE FIGURE
 "Marguerite," by E. Buisson, "Hors Concours"; on marble base.
- 618 LOUIS XIV BOULE TABLE
 Enriched with arabesques and scrolls; fine gilt bronze mountings.
- 619 BEAUTIFUL CLOCK SET
 Case enhanced with marqueterie and gilt bronze mountings.
- 620 EMPIRE EWER AND BASIN
 Oval; floral medallions; green grounds; sphinx spout.
- 621 TWO SEVRES VASES AND COVERS
 Decorated with green bands, figures and floral medallions; gilt bronze mountings; swan handles; imperial mark of 1804. Height, 16 inches.
- 622 SEVRES VASE
 Festooned neck and acanthus leaf handles; decorated with panels of trophies; royal blue ground diapered with gilding. Height, 17 inches.

623 SEVRES VASE AND COVER

Louis XVI; decorated with panels, "Cupids and Nymphs"; neck and base of royal blue. (Neck repaired.)
Height, 32 inches.

624 TWELVE CHINESE PLATES

Famille rose decoration of poppies and other flowers.
Diameter, 9 inches.

625 TWO CAPO DI MONTE CUPS, SAUCERS AND COVERS

Rustic handles; Cupid terminals; decorated in relief, "Cupids Playing."

626 LOUIS XVI MAHOGANY VITRINE

Shaped ends; upper part glazed and lined with brocade; supported by taper legs and stretcher; gilt bronze mountings; original in the Cluny Museum.
Height, 7 feet; width, 4 feet 8 inches.

627 LOUIS XV INLAID TALL CLOCK

Shaped case of kingwood and mahogany; finely mounted in gilt bronze; scroll and Cupid pediment; original at Versailles.
Height, 9 feet.

628 EMPIRE PEDESTAL WRITING TABLE

Mahogany; tooled green leather top; eight drawers; richly mounted with gilt bronze; large caryatids at the corners; similar to that at Malmaison which was originally in the private apartment of Napoleon I.
Length, 6 feet 6 inches.

629 SEVRES JEWEL BOX

Louis XV; decorated with panel after Watteau; royal blue ground; raised gilding; flowers enrich the interior.

- 630 GILT BRONZE SQUARE JEWEL BOX
Top set with a miniature of "Lady Jersey."
- 631 SEVRES BOTTLE AND COVER
Louis XVI gilt bronze mountings; decorated with birds and flowers; fine gilding. Height, 16 inches.
- 632 DECORATED DRESDEN GROUP
Four personages in the costume of Henry III period.
- 633 TWO EMPIRE VASES
Baccarat crystal; gilt bronze mountings; swan handles. Height, 14 inches.
- 634 TWO LOUIS XVI PEDESTALS
Ebonized and inlaid; gilt bronze mountings. Height, 3 feet 9 inches.
- 635 RARE SILK MUSSULMAN ROBE
Emerald green, with gold threads woven in yoke and borders.
- 636 RARE SILK MUSSULMAN ROBE
Deep cream with gold threads woven in yoke and borders.
- 637 TWO EMPIRE VASES AND COVERS
Decorated with oval medallions of classical subjects on green grounds; gilt bronze mountings. Height, 21 inches.
- 638 TWO SEVRES VASES AND COVERS
Royal blue with fine gilding and gilt bronze mountings of trophies. Height, 12 inches.
(See Illustration)

- 639 BEAUTIFUL SEVRES PERFUME BURNER
 Panel decoration after Watteau, by Poitevin; royal blue grounds; gilt bronze mountings of three scrolled female figure handles; tripod base.
 Height, 2 feet 2 inches.
- 640 TWO CAPO DI MONTE VASES AND COVERS
 Relief decoration, "Cupids Playing"; mask handles.
 Height, 16 inches.
- 641 TWO LARGE CAPO DI MONTE VASES
 Urn shaped; relief decoration, "Sacrifice"; swan head handles; necking of ivy leaves.
 Height, 2 feet 4 inches.
- 642 TWELVE ROCKINGHAM PLATES
 Decorated with floral medallions; green borders finely gilded.
 Diameter, 9 inches.
- 643 DECORATED DRESDEN AND GILT BRONZE GROUP
 Stage coach and four horses and four figures of porcelain; coach of bronze; on oval velvet base. (Slight repairs.)
- 644 SEVRES BISQUE PEDESTAL
 Shaft decorated in relief, "Classic Dance"; on royal blue base; square top of green marble; mountings of gilt bronze. (Repaired.)
 Height, 3 feet 9 inches.
- 645 BEAUTIFUL LOUIS XVI SALON SUITE
 Finely carved and gilt frames; oval backs; upholstered in Aubusson tapestry, cream floral panels with pale green grounds; consisting of sofa and four arm chairs.
- 646 INTERESTING LOUIS XV INLAID COMMODE
 Shaped front; tulip and kingwood; gilt bronze mounting; rouge royal marble top. Width, 4 feet 4 inches.

- 647 TWO LARGE CHINESE JARS AND COVERS
 Famille verte; decoration of flowers, birds and butterflies in the manner of the Kang-hsi period.
 Height, 2 feet 4 inches.
- 648 CHINESE VASE AND COVER
 Famille rose decoration of birds and flowers; fine Louis XV gilt bronze mountings.
- 649 EMPIRE CRYSTAL CLOCK SET
 Enriched with gilt bronze mountings; eagle tops; two candelabras fitted for four lights each.
 Height, 24 inches.
- 650 TWO CHINESE VASES
 Bottle shaped; decorated in the Ming manner with bird and flower medallions on purple grounds; fine mountings of gilt bronze in the Louis XVI style.
 Height, 20 inches.
- 651 ROUND SEVRES PEDESTAL
 Louis XVI style; shaft of bisque showing the "Seasons," modelled by Latourneur; neck and base of royal blue with raised gilding; mountings of gilt bronze.
 Height, 3 feet 6 inches.
- 652 CAPO DI MONTE JEWEL BOX
 Turret shape; decorated in relief with mythological subjects.
- 653 SEVRES JEWEL CASKET
 Enriched with panel, "Fête Champêtre."
- 654 SEVRES JEWEL CASKET
 Enriched with medallion in purple Camaieu, "Cupid and Psyche"; sea green ground; flowers inside.

- 655 SOLITAIRE LOWESTOFT COFFEE SET
 Decoration of pink scale and bouquets of flowers; consisting of coffee pot, sucrier, creamer, cup and saucer and tray.
- 656 TWO CAPO DI MONTE VASES AND COVERS
 Ovoid bodies; decorated in relief with ram head handles and subject, "The Chariot of Venus."
 Height, 20 inches.
- 657 LARGE BRONZE FIGURE
 "Othello," finely modelled by Ele. Guillemin, "Hors Concours."
 Height, 3 feet 9 inches.
- 658 TWO EMPIRE SEVRES VASES
 Mask handles; decorated with medallions showing the "Great Emperor's Battles"; gilt bronze mountings.
 Height, 31 inches.
- 659 TWO SEVRES VASES AND COVERS
 Decorated with pastoral medallions by Cuilliva; royal blue grounds; on revolving base and mounted with gilt bronze.
 Height, 2 feet 6 inches.
- 660 ROYAL BLUE SEVRES PEDESTAL
 Louis XVI style; richly decorated with raised gilding; mountings of gilt bronze; revolving top of rouge royal marble.
 Height, 4 feet 6 inches.
- 661 TWO LARGE DRESDEN PARROTS
 Finely modelled; decorated in brilliant natural colors on rocaille bases.
- 662 SEVRES BISQUE BUST
 "Marie Antoinette"; on base of royal blue; mounted with gilt bronze.
 Height, 32 inches.

663 TWO LARGE SEVRES VASES

Revolving bodies, decorated with subjects after Watteau, by G. Poitievin; royal blue ground enriched with raised gilding. Scroll figure handles; garlanded and scroll bases of gilt bronze. Marked: Offré par le duc de Lauzun à Madame de Compans.

Height, 3 feet 9 inches.

664 SEVRES JARDINIÈRE AND GILT BRONZE TRIPOD

Decorated with beautiful trophies in raised gilding on royal blue ground; bronze serpent support; the tripod with Satyr heads and hoof feet.

Height, 3 feet 11 inches.

665 LARGE BRONZE FIGURE

"Judith," finely modelled by Ele. Guillemin, "Hors Concours."

Height, 3 feet 9 inches.

666 LOUIS XIV BOULE CABINET

Beautiful gilt bronze mountings.

Height, 3 feet 8 inches; width, 3 feet 8 inches.

667 LOUIS XVI MAHOGANY SECRETAIRE

Six drawers; fall front; bronze handles.

Height, 5 feet; width, 2 feet 8 inches.

668 TWO ROSE DU BARRY SEVRES VASES

Louis XVI; embellished with the Bourbon coat of arms; beautifully mounted in gilt bronze; ram head handles and tripod stands.

Height, 16 inches.

669 TWO EMPIRE SEVRES VASES

Revolving tops; finely painted panels, "Napoleon at Malmaison," on royal blue grounds with gilding; mountings of swan handles and claw feet in gilt bronze.

Height, 24 inches.

- 670 FINE BRONZE FIGURE
 "Phoebe," by Denechau; antique verte patine; on rouge royal marble base. Height, 38 inches.
- 671 DECORATED DRESDEN GROUP
 Five figures on rococo base, "The Music Lesson."
- 672 LOUIS XIV WRITING TABLE
 Tulip and kingwood with cabriole legs; finely mounted in gilt bronze; tooled green leather top.
 Length, 4 feet 6 inches.
- 673 TWO SEVRES VASES AND COVERS
 Decorated with panels of rural subjects; grounds of bleu de roi; gilt bronze mountings. Height, 22 inches.
- 674 SUPERB LOUIS XVI SEVRES GARNITURE
 Finely decorated with pastoral panels and gilt bronze mountings; comprised of two vases and coupe. (Base of coupe repaired.) Height of vases, 36 inches.
 Height of coupe, 19 inches.
- 675 GILT BRONZE FIGURE
 "The Breeze," by A. Gory; head and arms of carrara marble. Height, 26 inches.
- 676 LOUIS XV SALON SUITE
 Finely carved and gilt frames; medallion backs; upholstered in beautiful blue stripe and floral silk brocade; consisting of sofa, two large arm chairs and four side chairs.
- 677 DECORATED DRESDEN GROUP
 Four personages playing musical instruments, after Pater.

678 GILT BRONZE BUST

"Pensee," by A. Gory; the head of marble.

Height, 18 inches.

679 TWO LOUIS XVI SEVRES VASES

Decorated with pastoral subjects by Karelle; royal blue ground enhanced by gilded trophies; gilt bronze mounting.

Height, 29 inches.

680 BACCARAT CRYSTAL CUP

Embellished with Limoges enamel panel and two gilt bronze handles.

681 TWO BOTTLE-SHAPED DELFT VASES

Polychrome; bird and floral decoration.

Height, 17 inches.

